

**A Sustainable Future for the West Midlands  
Regional Sustainable Development Framework**

**Refreshed Draft – November 2007**

# Contents

<b>Welcome .....</b>	<b>1</b>
What is sustainable development? .....	1
Sustainable Development in the West Midlands .....	4
Key issues in the West Midlands .....	4
The contribution of regional policy .....	5
What the Framework is .....	7
<b>The Framework Part 1: Vision, Principles and Objectives .....</b>	<b>10</b>
A Vision of a sustainable West Midlands .....	10
Working Principles .....	11
Sustainable Development Objectives for the West Midlands .....	12
1. Sustainable consumption and production .....	13
2. Climate change and energy .....	13
3. Natural resource protection and environmental enhancement .....	14
4. Sustainable communities .....	14
<b>The Framework Part 2: Putting it into practice .....</b>	<b>17</b>
Using the Framework in statutory Sustainability Appraisal .....	18
Using the Framework for other strategies, policies and plans .....	19
1. Scoping the sustainable development issues .....	21
2. Consultation .....	21
3. Identifying measures to address key sustainable development objectives .....	22
4. Identifying key decision-makers .....	23
5. Evaluate sustainability of strategy/policy/plan .....	24
6. Monitoring progress .....	24
Engagement and capacity building .....	25
Updating the Framework .....	25
Appendix 1: Regional strategies and partners .....	26
Appendix 2: Scoping template .....	30
Appendix 3: Case studies .....	52

## Welcome

Welcome to the Regional Sustainable Development Framework for the West Midlands. The aim of the Framework is to help people that develop, review and implement strategies, policies and plans in the West Midlands to ensure their work contributes towards a sustainable future for the Region. The Framework is intended to be useful at local and sub-regional level as well as at regional level, and sets out differing approaches depending on whether strategies, policies and plans are subject to statutory Sustainability Appraisal or not. The Framework is designed to support regional delivery of the UK Sustainable Development Strategy 'Securing the Future'<sup>1</sup>.

### What is sustainable development?

The goal of sustainable development is to enable all people throughout the world to satisfy their basic needs and enjoy a better quality of life, without compromising the quality of life of future generations. A sustainable society is one that uses resources efficiently and sensibly; treats the environment responsibly and sensitively; meets social needs in a way that is fair and

---

<sup>1</sup> <http://www.sustainable-development.gov.uk/publications/uk-strategy/uk-strategy-2005.htm>

November 2007

enables people to take part in and influence decisions that affect them; and where economic success is a means to maximising wellbeing for all rather than an end in itself.

Significant changes to the way we live and work are essential to ensure a sustainable future. We are currently using resources at a level and rate that damages the environment and disadvantages those parts of society that already benefit least from our unsustainable lifestyles. If everyone in the world were to consume resources in the same way as we do in the UK, we would need three planets to support us<sup>2</sup>. There is a scientific consensus that our actions are changing the earth's climate, and the UK government's Chief Scientific Adviser has described climate change as the most severe problem we face. However, despite the economic growth that has fuelled increasing rates of consumption over the past few decades, levels of "life satisfaction" have barely changed<sup>3</sup> – so our lifestyles

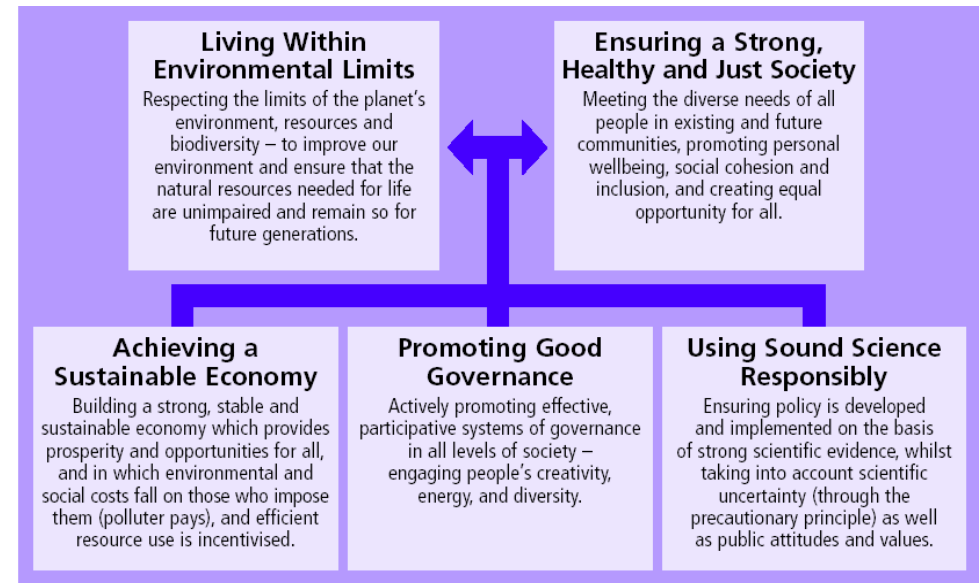
---

<sup>2</sup> 'Ecological Budget UK – Counting Consumption' (WWF/SEI/CURE, 2005) <http://www.wwflearning.org.uk/ecobudget/>

<sup>3</sup> 'Redefining prosperity: resource productivity, economic growth and sustainable development' (Sustainable Development Commission, 2003) <http://www.sd->

don't appear to be making us happier or improving our feelings of wellbeing. Sustainable development recognises that quality of life and well-being are affected not only by economic prosperity and security, but by other essential elements such as good health, a pleasant and healthy environment, a thriving and inclusive society, high quality employment, cultural vitality, and good housing. Sustainable development also means respecting the absolute limits to the earth's ability to provide resources and reabsorb pollution and waste, taking account of how our actions affect other parts of the world and avoiding passing burdens on to future generations.

The UK Sustainable Development Strategy 'Securing the Future' sets out five guiding principles for a sustainable future, defined in terms of a strong, healthy and just society, living within environmental limits, supported by a sustainable economy, good governance, and the responsible use of sound evidence in policy-making.



'Securing the Future' (Defra, 2005)

In order to achieve a sustainable future, 'Securing the Future' sets out four priorities for immediate action in the UK, which have been used to guide the development of this Framework:

- **Sustainable Consumption and Production** – Sustainable consumption and production is about achieving more with less, looking at how goods and services are produced and the impacts of products and materials across their whole lifecycle, and building on people's awareness of social and environmental concerns. This includes reducing the inefficient use of resources which are a drag on the economy, helping to boost business competitiveness and break the link between economic growth and environmental degradation.
- **Climate Change and Energy** – The effects of a changing climate can already be seen. A profound change is needed to the way we generate and use energy, and in other activities that release greenhouse gases. At the same time we must prepare for the climate change that cannot now be avoided.
- **Natural Resource Protection and Environmental Enhancement** – Natural resources are vital to our existence and that of communities throughout the world. We need a better understanding of environmental limits, environmental enhancement and recovery where the environment is most degraded to ensure a decent environment for everyone, and a more integrated policy framework.
- **Sustainable Communities** – Sustainable communities embody the principles of sustainable development at the local level. Developing sustainable communities will involve working to give communities more power and say in the decisions that affect them; and working in partnership at the right level to get things done.

## **Sustainable Development in the West Midlands**

The West Midlands has a positive track record of partnership working amongst its agencies and institutions. Much policy-making has embraced the principles of sustainable development and there are many examples of good sustainable practice in delivery in the region, some of which are highlighted at Appendix 3. However, there are a number of obstacles to overcome in the process of achieving a more sustainable future for the West Midlands. Some of these are discussed below.

### ***Key issues in the West Midlands***

Over recent decades, development in the West Midlands has been dispersed in a way that has encouraged movement of people and jobs away from major urban areas. This has had impacts for both urban and rural areas. Central **urban neighbourhoods** have suffered from increasing social exclusion and deprivation, damaged and degraded environments, a lack of adequate housing and in some areas collapse of the local housing market, consequently making urban areas less attractive for residents and investors. In **rural communities**, increasing housing costs and inward migration has led to a changing demographic profile,

areas of reduced economic activity, with pockets of deprivation particularly in more remote rural areas. Many rural areas also have increasing problems of accessibility to jobs and services. There are opportunities to improve links between urban and rural communities through the provision of local produce, sustainable fuel sources and opportunities for recreation.

There is a shortage of affordable **housing** in the West Midlands, and the Region also faces significant problems with regard to the condition of much of its housing, particularly in the private rented sector. As well as issues with the current supply of housing, the Region is faced with demanding projections for new housing development, which will prove a challenge to regional policies aiming to focus development in the major urban areas, and will also place a strain on regional infrastructure, including essential services such as water supply.

People are living increasingly further away from their work and the services and amenities they use, meaning that they need to travel further and more often, with a greater proportion of journeys made by car. This combined with the region's position as a national transport hub for both road and rail leads to problems of

congestion, poor air quality and streets that are unsafe for walking and cycling. Growing demand for **transport** is placing increasing strain on the ability of the existing transport infrastructure to cope, and the prevalence of less sustainable means of transport is an important element of the Region's emissions of greenhouse gases.

The West Midlands lags behind other regions in the UK and Europe in terms of economic growth, affected by factors such as levels of productivity and investment, and there are pockets of deprivation across the region. The structure of the Region's **economy** still relies heavily on manufacturing industry. The need for local economic diversification is a particular issue for some of the more rural areas of the Region, where faster-growing industrial sectors are under-represented and there is a reliance on more traditional patterns of industry, particularly agriculture and related land-based activity. The shifting economic profile of the region means that the **skills** required of the regional workforce are changing; but the West Midlands has a high proportion of the workforce with low-level or no formal qualifications.

The effects of **climate change** are already being felt in the UK, and such effects will become more apparent in the West Midlands over the next few decades. We are likely to see warmer summers and milder, wetter winters, with more unpredictable weather and more frequent extreme weather events such as storms and flooding. All of this has implications for the economy, regional infrastructure, health, agriculture, wildlife, and property, as outlined in Sustainability West Midlands' report 'The Potential Impacts of Climate Change in the West Midlands'<sup>4</sup>. The scientific consensus is that the relatively rapid climate change that is currently taking place is due to manmade greenhouse gas emissions, the primary source of which (although there are other sources) is the use of energy, either in the home, by industry, or in transport. The West Midlands emits slightly less carbon dioxide (the most significant greenhouse gas) per person than the UK average, although the impacts of transport in the region are higher because of higher than average car use<sup>5</sup>.

---

<sup>4</sup> <http://www.sustainabilitywestmidlands.org.uk/>

<sup>5</sup> 'Counting Consumption in the West Midlands' Ecological Budget UK West Midlands Regional Report, WWF 2006  
<http://www.wwflearning.org.uk/ecobudget/>

### ***The contribution of regional policy***

The **Regional Spatial Strategy**<sup>6</sup> recognises that the outward migration of people and jobs from the region's Major Urban Areas is unsustainable. It sets out policies for urban renaissance, creating attractive urban areas where people want to live, with vibrant town and city centres and high quality urban environments, that can meet their own economic and social needs; and rural renaissance through the improvement of choice in housing, diversification of the rural economy, improved transport links, and environmental protection. The **Regional Housing Strategy**<sup>7</sup> sets the strategic context for improved housing choice in the region, supporting the central principles of the Regional Spatial Strategy and the delivery of the Government's Sustainable Communities agenda<sup>8</sup>.

The **Regional Transport Strategy**<sup>9</sup> highlights the need for the regional transport network to be improved to facilitate a more sustainable pattern of development, improving accessibility and mobility, reducing the need to travel, providing better public transport links and

<sup>6</sup> <http://www.wmra.gov.uk/page.asp?id=49>

<sup>7</sup> <http://www.wmra.gov.uk/page.asp?id=131>

<sup>8</sup> <http://www.communities.gov.uk/index.asp?id=1139865>

<sup>9</sup> <http://www.wmra.gov.uk/page.asp?id=70>

enabling and encouraging sustainable transport choices. The West Midlands Transport Delivery Plan<sup>10</sup> identifies priority areas for activity to focus in order to deliver more sustainable transport both in terms of the provision of transport services and the choices that individuals make.

The **Regional Economic Strategy**<sup>11</sup> and Spatial Strategy seek to encourage the development of high-growth employment sectors and the modernisation of existing traditional industries. Economic development is promoted in the areas of greatest need through regeneration zones and high technology corridors, whilst high value-added sectors are promoted through the development of business clusters.

The **Regional Energy Strategy**<sup>12</sup> sets targets for increasing energy efficiency to reduce overall energy use, increasing the proportion of energy that comes from renewable sources, and exploiting the business opportunities in both energy efficiency and renewable energy for the benefit of the regional economy. The West Midlands produces very little of the energy it uses,

<sup>10</sup> <http://www.wmra.gov.uk/page.asp?id=12>

<sup>11</sup> <http://www.advantagewm.co.uk/west-midlands-economic-strategy.pdf>

<sup>12</sup> <http://www.energywm.org.uk/page.asp?id=4>

and the Regional Energy Strategy also sets out plans to ensure a secure supply of energy in the future.

In order to address the unsustainable trends in the way the Region has developed in the past, the different agencies and organisations working in the Region and the strategies, policies and plans they produce and deliver will need to work together. No one policy area can be addressed without taking into account the wider issues. Housing, for example, can have a huge impact on improving neighbourhoods by providing well-designed buildings and places; it can help deliver reductions in energy use and greenhouse gas emissions by incorporating energy efficiency measures and renewable energy technology; it contributes to economic development by ensuring that skilled workers come to and stay in the Region; it can contribute to sustainable transport by making the best use of existing infrastructure, whilst also having an enormous impact on demand for transport in different areas; it can contribute to the health of the Region by providing dry, warm shelter; and decent, pleasant places to live are a fundamental building block of a sustainable community. However, some of these issues fall outside the remit of the Regional Housing Strategy and therefore need to be dealt with by other strategies, policies and plans and at

November 2007

7

sub-regional and local level; highlighting the need for effective linkages across strategy and policy development.

### **What the Framework is**

This Framework, rather than being a separate strategy for sustainable development in itself, is designed to help all strategies, policies and plans to contribute to a sustainable future for the West Midlands. An aligned, consistent and mutually reinforcing approach to policy at regional, subregional and local level is essential to ensure sustainable development can be delivered.

The Framework sets out a *vision* and a set of *working principles*, and a common set of sustainable development *objectives* for the West Midlands, designed to help the Region move towards a more sustainable future. Most importantly, the Framework sets out a *process* by which these principles and objectives can be incorporated into the development, review and implementation of strategies, policies and plans at regional, sub-regional and local level. Where a Strategy or plan is subject to formal Sustainability Appraisal<sup>13</sup>,

---

<sup>13</sup> <http://www.communities.gov.uk/index.asp?id=1164579>

the Framework is designed to support the Appraisal process and to provide a reference for scoping the sustainability issues. Where a formal Sustainability Appraisal is not required, the Framework sets out a best practice approach to incorporating sustainable development objectives within the strategy, policy or plan development process.

The use of a common set of sustainable development objectives in all strategy development and policy-making in the Region will ensure that the various agencies and institutions contributing to public policy development and delivery in the Region are moving in the same direction, with strategies and policies aligned towards common goals and working in a complementary and co-operative way. In this way, the Framework supports the Regional Assembly in its goal of ensuring that regional strategies are complementary and aligned.

Some of the key *partners, policy areas and strategies* that will be required to implement the Framework process are listed at Appendix 1. But the process will hopefully engage a much wider range of partners, including business groups, professional organisations, Trade Associations and the voluntary and community sector. Setting out the process clearly will also help

these groups to contribute to policy development and delivery and to understand what sustainable development means in practice.

As far as possible this Framework reflects existing principles, objectives, indicators and measures of progress rather than creating new ones. The vision is based on the regional vision outlined in the Regional Spatial Strategy, whilst the principles and objectives reflect those outlined by the government in 'Securing the Future' and key regional commitments in the Regional Concordat<sup>14</sup> and other regional strategies. The suggested monitoring indicators are largely based on existing national sustainable development indicators and those published in the Regional Spatial Strategy Annual Monitoring Report. Where recognised national or regional sustainable development indicators do not exist, alternative indicators (linked to available data sources) have been proposed.

The West Midlands Regional Sustainable Development Framework has been prepared for the Regional Assembly<sup>15</sup> by Sustainability West Midlands<sup>16</sup>, supported

<sup>14</sup> <http://www.wmra.gov.uk/page.asp?id=9>

<sup>15</sup> <http://www.wmra.gov.uk/>

<sup>16</sup> <http://www.sustainabilitywestmidlands.org.uk/>

by the West Midlands Sustainable Development Officers Network. The Framework is endorsed by the Regional Assembly, Government Office for the West Midlands<sup>17</sup> and Advantage West Midlands<sup>18</sup>, the regional development agency. The Framework has been revised to reflect developments in regional policy and the launch of 'Securing the Future', the 2005 UK Sustainable Development Strategy.

---

<sup>17</sup> <http://www.gowm.gov.uk/>

<sup>18</sup> <http://www.advantagewm.co.uk/>

## The Framework Part 1: Vision, Principles and Objectives

### A Vision of a sustainable West Midlands

Our vision for a sustainable West Midlands is one of an economically successful, outward-looking and adaptable region, rich in culture and environment, where everyone, working together, is able to enjoy well-being and quality of life, meeting their aspirations and needs without prejudicing the ability of others, now or in the future, to do the same.

This vision is based on the vision of the Regional Spatial Strategy and Regional Concordat. The Framework supports the central aim of the Regional Spatial Strategy to deliver urban and rural renaissance whilst protecting and enhancing the quality of the environment, ensuring that people and jobs are attracted to the major urban areas, and that rural communities can offer affordable

housing, decent access to services and opportunities, and a diversified rural economy. In order to achieve this there is a need to change the way we live and work. This Framework is designed to support the implementation of change through the way strategies, policies and plans incorporate sustainable development objectives.

## Working Principles

To realise our Vision we will need to recognise and address the unsustainable aspects of our lifestyles and communities. To do this, we will need understanding

and leadership based on the following principles, developed from the guiding principles of 'Securing the Future', which should inform all our work:

- **Putting people and communities at the centre** of strategy development and policy decisions; engaging people in the decisions that affect their lives and their communities, promoting personal wellbeing, social cohesion and inclusion, creating equal opportunity for all, and meeting the varied needs of our diverse communities in terms of culture, ethnicity, faith, gender, sexuality, age, and disability, and in the various rural and urban communities in the West Midlands region.
- **Valuing the environment and living within environmental limits**, respecting the limits of the earth's ability to provide resources and reabsorb pollutants in order to avoid serious or irreversible damage, and recognising the importance of the environment and biodiversity to well-being, health and economic vitality.
- **Gathering and using sound evidence** as the basis for policy-making, taking account of whole-life costs and benefits of our decisions and activities, including impacts that can't easily be valued in money terms, and taking account of long-term impacts in the wider social, environmental and economic context, and adopting the "precautionary principle", that is, where there is a possibility that an action might result in damage to human health or the environment, the action should be avoided or measures identified to prevent or limit damage and degradation.
- **Taking account of the national and global implications of our activities**, as well as those within the Region, and wherever possible adopting the "polluter pays" principle, that those responsible for environmental or social degradation should meet the costs of the consequences.

## **Sustainable Development Objectives for the West Midlands**

In order to achieve our vision of a sustainable West Midlands, we need to focus on the following objectives. These reflect key regional priorities around society, the environment, resources and the economy. They also support the UK priorities of sustainable consumption and production, climate change and energy, natural resource protection and environmental enhancement, and sustainable communities as set out in *Securing the Future*, the UK Government's Sustainable Development Strategy.

None of these objectives exists in a vacuum – all of them have implications for the others; and all areas of policy development and implementation can contribute to multiple objectives. For example, almost all of the objectives will play some part in reducing the region's contribution to climate change. Sustainability West Midlands will be working with partners to identify the best arrangements for accountability and delivery of each of these objectives.

## 1. Sustainable consumption and production

- 1.1. Use natural resources such as water and minerals efficiently, including by incorporating efficiency measures into new land use and developments, redevelopment and refurbishment
- 1.2. Promote and support the development of new high value and low impact technologies, especially resource-efficient technologies and environmental technology initiatives
- 1.3. Promote and ensure high standards of sustainable resource-efficient design, construction and maintenance of buildings, both new build and existing stock, where possible exceeding the requirements of the Building Regulations
- 1.4. Increase use of public transport, cycling and walking as a proportion of total travel in order to reduce road traffic congestion, pollution and accidents, and improve health through increased physical activity
- 1.5. Ensure development is primarily focused in the major urban areas, and makes efficient use of existing physical infrastructure and reduces need to travel, especially by private car
- 1.6. Encourage and enable waste minimisation, reuse, recycling and recovery to divert resources away from the waste stream, including the use of recycled materials where possible
- 1.7. Encourage local sourcing of food, goods and materials
- 1.8. Reward efficient resource use and encourage development of alternative and renewable resources in order to reduce dependence on fossil fuels
- 1.9. Encourage corporate social and environmental responsibility, with regional organisations and agencies leading by example
- 1.10. Encourage and support a culture of enterprise and innovation, including social enterprise
- 1.11. Achieve a strong, stable and sustainable economy and prosperity for the benefit of all the Region's inhabitants

## 2. Climate change and energy

- 2.1. Reduce overall energy use through increased energy efficiency
- 2.2. Increase the proportion of energy generated from renewable and low carbon sources, including by micro-generation, CHP, district heating, and in transportation
- 2.3. Minimise the Region's contribution to the causes of climate change by reducing emissions of greenhouse gases from transport, domestic, commercial and industrial sources
- 2.4. Implement a managed response to the unavoidable impacts of climate change, ensuring that the design and planning process takes into account predicted changes in the Region's climate
- 2.5. Land use and development that takes into account predicted changes in the Region's climate including flood risk

### 3. Natural resource protection and environmental enhancement

- 3.1. Value, protect, enhance and restore the Region's environmental assets, including the natural, built and historic environment and landscape
- 3.2. Value, maintain, restore and re-create regional biodiversity, where possible using approaches that improve the resilience of natural systems such as linking fragmented habitats
- 3.3. Minimise air, water, soil, light and noise pollution levels and create good quality air, water and soils
- 3.4. Encourage land use and development that optimises the use of previously developed land and buildings
- 3.5. Encourage land use and development that creates and sustains well-designed, high quality built environments that incorporate green space, encourage biodiversity, and promote local distinctiveness and sense of place
- 3.6. Encourage local stewardship of local environments, for example by promoting best practice in agricultural management or enabling communities to improve their neighbourhoods
- 3.7. Promote environmental justice, recognising that deprived areas and disadvantaged communities are more likely to be affected by environmental damage and degradation

### 4. Sustainable communities

- 4.1. Enable communities to influence the decisions that affect their neighbourhoods and quality of life
- 4.2. Ensure easy and equitable access to services, facilities and opportunities, including jobs and learning, and that people are not disadvantaged with regard to ethnicity, gender, age, disability, faith, sexuality, background or location
- 4.3. Address poverty and disadvantage, taking into account the particular difficulties of those facing multiple disadvantage
- 4.4. Improve health and reduce health inequalities by encouraging and enabling healthy active lifestyles and protecting health, as well as providing equitable access to health services
- 4.5. Provide decent and affordable housing for all, of the right quantity, type, tenure and affordability to meet local needs, in clean, safe and pleasant local environments
- 4.6. Reduce crime, fear of crime and antisocial behaviour
- 4.7. Improve opportunities to participate in the diverse cultural, sport and recreational opportunities the West Midlands can offer locally and in the wider region
- 4.8. Encourage physical development with a better balance of jobs, housing, social and cultural services and amenities within each part of the Region in order to meet local needs locally and encourage stable and sustainable communities
- 4.9. Ensure that the Region's workforce is equipped with the skills to access high quality employment opportunities suited to the changing needs of the Regional economy, whilst recognising the value and contribution of unpaid work
- 4.10. Promote investment in future prosperity, including ongoing investment and engagement in learning and skills development

## The Framework Part 2: Putting it into practice

The Framework is *not* an action plan or strategy to deliver sustainable development in the West Midlands. For public policy-making and service delivery to contribute successfully to a sustainable future, all areas of work need to contribute to the sustainable development objectives set out in Part 1. This section of the Framework sets out a process to help this happen. The process is targeted towards public policy and service delivery but we hope that it will help people working in other sectors to think about how their work can reflect and contribute to the Region's sustainable development goals. The Framework is designed to be used **from the beginning and throughout the process of development or review** to consider the strategy, policy or plan in relation to the Region's sustainable development objectives.

Some strategies and plans will be subject to statutory Sustainability Appraisal. This process is an extensive and exhaustive approach to ensuring that sustainability issues are incorporated throughout the process of policy development, and it is not the intention that the Framework should add a further layer of complexity to this process. However, other strategies, policies and plans are not subject to this level of appraisal. This section is therefore divided into recommendations for using the Framework to inform statutory Sustainability Appraisal, and a more extensive process of scoping and identifying measures for strategies,

*November 2007*

policies and plans for which statutory Sustainability Appraisal is not required.

This Framework aims to establish a process whereby the principles of sustainable development are already central to all policy thinking prior to the commencement of development or review, and are therefore embedded throughout the process. Guidance and advice is available at each stage of the process from the Assembly and Sustainability West Midlands. SWM have identified **Policy Ambassadors** to work with Regional Policy Partnerships and Concordat Partners, who provide knowledge and guidance on sustainable development issues from a particular policy perspective, while remaining an independent voice to ensure sustainable development objectives are treated with appropriate priority. The Framework also encourages Policy Partnerships and policy steering groups to identify a **sustainable development champion** from within their membership, who should be actively involved in the process of scoping policy to ensure the Region's sustainable development objectives are explicitly and systematically considered.

## Using the Framework in statutory Sustainability Appraisal

The Regional Spatial Strategy and other development plans are already subject to formal Sustainability Appraisal (SA) incorporating Strategic Environmental Assessment (SEA), which is intended to strengthen consideration of environmental issues in evaluating impacts. UK Government guidance suggests that other plans, programmes and strategies subject to SEA should also undergo a more broad-based Sustainability Appraisal incorporating an evaluation of the economic and social impacts. The Government has produced guidance for conducting statutory Sustainability Appraisal<sup>19</sup>. The Framework is **not** designed to fulfil the requirements of Sustainability Appraisal, and policy-makers responsible for the development or review of strategies and plans subject to statutory Sustainability Appraisal are advised to consult Government guidance to ensure their arrangements for Sustainability Appraisal meet requirements.

---

<sup>19</sup> 'Sustainability Appraisal of Regional Spatial Strategies and Local Development Documents: Guidance for Regional Planning Bodies and Local Planning Authorities' (Office of the Deputy Prime Minister, November 2005) <http://www.communities.gov.uk/index.asp?id=1164579>

The Framework is however designed to be useful for informing Sustainability Appraisal. It is most likely to be helpful at the first stage of scoping the context, setting the objectives, establishing the baseline and deciding on the scope. Indeed, Government guidance suggests that the Regional Sustainable Development Framework should be the starting point for developing a revision of the Regional Spatial Strategy. This Framework has been used to inform the Appraisal Framework for the partial revision of the West Midlands Regional Spatial Strategy.

Policy-makers responsible for regional strategies, policies and plans subject to statutory Sustainability Appraisal can use the Framework in a number of ways. The sustainable development objectives set out in the Framework can also inform the development of the Sustainability Appraisal Framework and the criteria against which policy options will be evaluated. As well as providing an agreed set of sustainable development objectives for the Region, this Framework provides a source for some of the baseline information required in scoping a Sustainability Appraisal. For example, Appendix 1 lists of regional strategies that might be relevant to the work in question and Appendix 3 lists suggested accompanying indicators that can provide useful baseline data and be used to monitor progress

towards meeting the regional sustainable development objectives (Appendix 2). The sustainable development indicators include UK sustainable development indicators published at regional level by the Government<sup>20</sup>, the Audit Commission's Local Quality of Life indicators<sup>21</sup> and those in the Regional Spatial Strategy Annual Monitoring Report<sup>22</sup>.

However, although the Framework is likely to be useful in scoping Sustainability Appraisal, it should be regarded primarily as a starting point to inform the Appraisal. Flexibility should be retained to ensure that the Sustainability Appraisal Framework is appropriate and tailored to the strategy, policy or plan under consideration in each individual case. It is also important to bear in mind when developing the Sustainability Appraisal Framework that statutory Sustainability Appraisal must meet the requirements of the Strategic Environmental Assessment Directive<sup>23</sup>, and special consideration may need to be given to the selection of indicators and criteria to support this.

## **Using the Framework for other strategies, policies and plans**

The diagram below sets out how the process of development and review of strategies, policies and plans not subject to statutory Sustainability Appraisal should utilise this Framework to ensure regional working is effectively contributing to the achievement of a sustainable West Midlands. The process outlined below represents best practice, much of which is already reflected in current good practice when developing strategies, policies and plans.

---

<sup>20</sup> <http://www.sustainable-development.gov.uk/regional/index.htm>

<sup>21</sup> <http://www.audit-commission.gov.uk/reports/NATIONAL-REPORT.asp?CategoryID=&ProdID=OD488A03-8C16-46fb-A454-7936FB5D5589>

<sup>22</sup> <http://www.wmra.gov.uk/page.asp?id=52>

<sup>23</sup> <http://www.communities.gov.uk/index.asp?id=1143275>

	Stage	Key question	Output	
Engagement and capacity building	1. Scope the issues	How will this work contribute to the Region's sustainable development objectives?	Account of scoping process	Monitoring regional progress overall
	2. Consultation	Have stakeholders had the opportunity to contribute?	Completed consultation process and appropriate amendments to policy/project	
	3. Identify measures	How can the positive contribution of this work be maximised, and potential negative effects be minimised, avoided or compensated for?	Measures identified within policy/project	
	4. Identify key decision-makers and how to influence them	Where are the key decisions taken that impact on whether delivery of this work will be sustainable?	Decision points and measures to influence them identified within policy/project	
	5. Evaluate sustainability of strategy / plan / programme	Has this work properly taken account of regional sustainable development objectives?	Completed evaluation and appropriate amendments to policy/project	
	6. Monitoring/review	How will the contribution of the work to regional sustainable development objectives be incorporated in arrangements for monitoring?	Ongoing performance evaluation	

## 1. Scoping the sustainable development issues

Key question	Output
How will this work contribute to the Region's sustainable development objectives?	Account of scoping process

At the early stages of policy development or review, when policy-makers are setting out the objectives and issues for the work in question, they should also scope out how the work will contribute to the Region's sustainable development objectives, positively or otherwise.

The scoping process should consider each of the objectives within this Framework, and identify what effect the strategy might have. What benefits might it be able to bring? What negative impacts might it have? Policy-makers should take advantage of available research evidence to support the scoping of sustainability issues, for example, findings from climate change adaptation studies<sup>24</sup>.

As part of the process of strategy development and review, an account of this scoping process should be produced, setting out a definitive list of the objectives which the strategy or policy in question will address, and providing a reasoned explanation for those which it will not. This account need not be overly detailed or lengthy but should be clear

<sup>24</sup> <http://www.ukcip.org.uk/>  
November 2007

about how the strategy, policy or plan in question is relevant to each of the regional sustainable development objectives. A template for the scoping process is included at Appendix 2.

Many of the Region's sustainable development objectives will need to be taken on board by more than one policy area and by multiple strategies. In the process of policy development and review, authors should think about what links need to be made with other strategies and policies to ensure work in different policy areas is complementary, maximising the benefits for regional sustainability and minimising any negative impacts.

## 2. Consultation

Key question	Output
Have stakeholders had the opportunity to contribute?	Completed consultation process and appropriate amendments to policy/project

Consultation is an essential part of the preparation or review of any strategy, policy, or plan. It is important that this takes place at all levels relevant to the work in question (regional, sub-regional and or local), and at all relevant stages of the process, from scoping the issues to consultation on a draft policy document. At scoping stage consultation can be used not only to ensure that all of the relevant sustainable development objectives have been considered, but also to gather views on appropriate measures to maximise positive

impacts and prevent or minimise any negative effects. Consultation should seek to confirm that sustainability issues relevant to the strategy or policy's stakeholders have not been missed.

For strategies and policies at regional level or with regional significance, consultation responses should be invited from the Regional Concordat Partners and from all of the Regional Policy Partnerships. Sustainability West Midlands will prepare a consultation response commenting and advising on the incorporation of the Region's sustainable development objectives into the strategy, and its fit within the broader context of regional strategies contributing to regional sustainability. This response will be submitted both to the strategy authors and, where appropriate, to the Regional Assembly. In line with good practice, authors should consider making available an account of how strategies and other documents have been amended to reflect consultation comments.

### **3. Identifying measures to address key sustainable development objectives**

Key question	Output
How can the positive contribution of this work be maximised, and potential negative effects be minimised, avoided or compensated for?	Measures identified within policy/project

Having used the Framework to scope the sustainable development objectives their work will affect, policy-makers should identify how these objectives might be addressed. How can the potential benefits be maximised? How might barriers to achieving benefits be addressed? How can potential negative impacts be avoided or minimised? If negative impacts are unavoidable, how might the strategy or policy compensate? Organisations should think not only about how strategy or policy might incorporate measures to address sustainable development objectives, but also about how they can use their own tools and processes to contribute, for example using a sustainable procurement policy to encourage sustainable production amongst their suppliers.

Those developing strategies, policies or plans should also at this stage consider setting targets for sustainable development objectives to be incorporated in their work. This Framework does not seek to impose targets. Nor do we wish

to see a duplication of targets for the same objective in different strategies. However, targets do play an important role in providing something to aim for and measure performance against. It is therefore important that each of the Region's sustainable development objectives is supported by ambitious but realistic targets within the suite of regional strategies. The Government publishes a selection of sustainable development indicators at regional level and has produced a 'fact sheet' summarising the position in the West Midlands<sup>25</sup>. These may help guide the development of appropriate targets. Regional strategies, each of which includes thematic targets, are referenced at Appendix 1.

#### 4. Identifying key decision-makers

Key question	Output
Where are the key decisions taken that impact on whether delivery of this work will be sustainable?	Decision points and measures to influence them identified within policy/project

To ensure the measures identified in strategies to address regional sustainable development objectives are effective, it is essential to identify where decisions are made that lead to impacts and outcomes that are sustainable or otherwise. Often, although policy is developed at regional level, it is at local level that decisions are made and actions taken that lead

to consequences that are sustainable or otherwise. For example, the Regional Spatial Strategy sets the context for spatial development in the Region, but within that context, individual planning development decisions rest with local authorities. Similarly, the Regional Housing Strategy identifies the key issues for housing development in the Region, but local authorities and local strategic partnerships contribute directly to local regeneration and neighbourhood renewal. Local authorities have a central role in delivering measures that will contribute to how well the Region adapts to the unavoidable impacts of climate change, and measures that can minimise our future greenhouse gas emissions. Public sector organisations including local authorities and the health sector have enormous purchasing power that can be used to support sustainable procurement. Identifying the key decision-making points will allow the right information and resources to be made available, so the right decisions are made and people are aware of the significance of their role.

Often, a strategy's specific areas of responsibility mean it cannot take on board sustainable development objectives that are affected by the strategy's broader policy area. For example, in order to promote energy efficiency and take-up of renewable energy technology, the Regional Energy Strategy must seek to influence housing and transport policy. Other strategies are limited by a requirement to align with and reflect other policies at national or regional level. This type of limitation may prove a challenge in ensuring all of the

<sup>25</sup> <http://www.sustainable-development.gov.uk/regional/index.htm>

Region's sustainable development objectives are receiving adequate coverage and support. Where a policy area is important to achieving an objective, but the particular strategy in question is unable to fully address the objective, authors should seek to identify where these issues can be addressed, and how the Region can seek to influence these decision-making points.

### 5. Evaluate sustainability of strategy/policy/plan

Key question	Output
Has this work properly taken account of regional sustainable development objectives?	Completed evaluation and appropriate amendments to policy/project

Even where strategies, policies and plans are not subject to statutory Sustainability Appraisal, it is good practice to evaluate, during the strategy development process, how well the Region's sustainable development objectives are addressed.

### 6. Monitoring progress

Key question	Output
--------------	--------

How will the contribution of the work to regional sustainable development objectives be incorporated in arrangements for monitoring?

Ongoing performance evaluation

It is important to monitor progress towards our sustainable development objectives. Those responsible for strategies, policies and plans should seek to identify ways in which the arrangements for monitoring their impacts can take account of their contribution to sustainable development objectives. However, it will also be important to measure overall progress in the region, and this will be outside the scope of individual strategies, policies or plans.

Reflecting the broad range of issues affecting quality of life and sustainable development, there is no single measure that can tell us how we are doing. The Government publishes a selection of sustainable development indicators at regional level and has produced a 'fact sheet' summarising the position in the West Midlands<sup>26</sup>. The Audit Commission's Local Quality of Life indicators<sup>27</sup> provide much information that is useful in measuring progress on sustainable development objectives at subregional and local level. The West Midlands Annual Monitoring Report<sup>22</sup> provides regional

<sup>26</sup> <http://www.sustainable-development.gov.uk/regional/index.htm>

<sup>27</sup> <http://www.audit-commission.gov.uk/reports/NATIONAL-REPORT.asp?CategoryID=&ProdID=0D488A03-8C16-46fb-A454-7936FB5D5589>

data relating to progress on the Regional Spatial Strategy. Together, the suite of indicators outlined in Appendix 3 can provide a comprehensive picture of the Region's progress towards sustainable development.

Midlands website<sup>28</sup>. This allows the Framework to be more dynamic and responsive to developments in regional and national policy.

## **Engagement and capacity building**

The long-term aim is to reach a point where the principles of sustainable development are automatically at the forefront of regional policy. There is work to do on increasing and maintaining understanding and awareness of what sustainable development means for the West Midlands and how we can achieve a sustainable region. Part of the role of the Framework is to engage key strategy and policy developers, raising awareness of sustainable development and ensuring they have the capacity and skills to understand and deal with sustainability issues. This will be an ongoing process, led by Sustainability West Midlands and building on their work engaging Regional Policy Partnerships and Concordat Partners in developing this Framework.

## **Interactive Framework**

As well as this printed document, the Framework is available in a more interactive format on the Sustainability West

---

<sup>28</sup> <http://www.sustainabilitywestmidlands.org.uk/rsdf>

## Appendix 1: Regional strategies and partners

The key policy areas in regional working are currently as shown below:

<b>Policy area</b>	<b>Regional lead / Policy Partnership</b>	<b>Regional Strategies</b>	<b>Web link</b>
Spatial Planning	West Midlands Regional Assembly – Regional Planning Partnership	The Regional Spatial Strategy (RSS) (WMRA)	<a href="http://www.wmra.gov.uk/page.asp?id=49">http://www.wmra.gov.uk/page.asp?id=49</a>
Economic development	Advantage West Midlands	Delivering Advantage – the Regional Economic Strategy (AWM)	<a href="http://www.advantagewm.co.uk/west-midlands-economic-strategy.pdf">http://www.advantagewm.co.uk/west-midlands-economic-strategy.pdf</a>
		Regional Innovation Strategy (AWM)	<a href="http://www.advantagewm.co.uk/downloads/regional-innovation-strategy.pdf">http://www.advantagewm.co.uk/downloads/regional-innovation-strategy.pdf</a>
		Regional ICT Strategy (AWM)	<a href="http://www.advantagewm.co.uk/downloads/regional-ict-strategy.doc">http://www.advantagewm.co.uk/downloads/regional-ict-strategy.doc</a>
		Regional Social Enterprise Framework (AWM)	<a href="http://www.advantagewm.co.uk/downloads/west-midlands-social-enterprise-framework.pdf">http://www.advantagewm.co.uk/downloads/west-midlands-social-enterprise-framework.pdf</a>
		Regional International Trade Strategy (AWM)	<a href="http://www.advantagewm.co.uk/international-trade-strategy.html">http://www.advantagewm.co.uk/international-trade-strategy.html</a>
Housing	Regional Housing Board / Regional Housing Partnership	Regional Housing Strategy (Regional Housing Board)	<a href="http://www.wmra.gov.uk/page.asp?id=131">http://www.wmra.gov.uk/page.asp?id=131</a>

Policy area	Regional lead / Policy Partnership	Regional Strategies	Web link
Transport	Regional Transport Partnership (WMRA)	<p>Regional Transport Strategy – part of RSS (WMRA)</p> <p>Regional Transport Delivery Plan (Regional Transport Partnership)</p> <p>Regional Freight Strategy (in development)</p>	<p><a href="http://www.wmra.gov.uk/page.asp?id=47">http://www.wmra.gov.uk/page.asp?id=47</a></p> <p><a href="http://www.wmra.gov.uk/page.asp?id=12">http://www.wmra.gov.uk/page.asp?id=12</a></p>
Environment	<p>Regional Environment Partnership (WMRA)</p> <p>Regional Technical Advisory Board for Waste (RTAB)</p> <p>Regional Biodiversity Partnership</p> <p>Historic Environment Forum (English Heritage)</p> <p>Regional Forestry Forum (Forestry Commission)</p>	<p>Regional Waste Strategy (in development, RTAB)</p> <p>Regional Biodiversity Strategy (Regional Biodiversity Partnership)</p> <p>Regional Forestry Framework (Regional Woodland and Forestry Forum)</p> <p>Regional Water Resources Strategy (Environment Agency)</p> <p>Regional Energy Strategy (WMRA / Energy West Midlands)</p>	<p><a href="http://www.wmbp.org/strategy">http://www.wmbp.org/strategy</a></p> <p><a href="http://www.forestry.gov.uk/pdf/WestMidlandsRFF.pdf/\$FILE/WestMidlandsRFF.pdf">http://www.forestry.gov.uk/pdf/WestMidlandsRFF.pdf/\$FILE/WestMidlandsRFF.pdf</a></p> <p><a href="http://www.environment-agency.gov.uk/regions/midlands/567079/567098/112954/?version=1&amp;lang=e">http://www.environment-agency.gov.uk/regions/midlands/567079/567098/112954/?version=1&amp;lang=e</a></p> <p><a href="http://www.energywm.org.uk/page.asp?id=4">http://www.energywm.org.uk/page.asp?id=4</a></p>

Policy area	Regional lead / Policy Partnership	Regional Strategies	Web link
Learning and Skills	Regional Skills Partnership	Regional Skills Partnership Introduction and Priorities 2005 (Regional Skills Partnership)	<a href="http://www.advantagewm.co.uk/rsp-introduction-and-priorities-2005.pdf">http://www.advantagewm.co.uk/rsp-introduction-and-priorities-2005.pdf</a>
		Regional Language Strategy (AWM)	<a href="http://www.advantagewm.co.uk/downloads/language-strategy.pdf">http://www.advantagewm.co.uk/downloads/language-strategy.pdf</a>
Culture	Culture West Midlands	Regional Cultural Strategy (CWM)	<a href="http://www.culturewm.org.uk/cwmjsp/index.jsp">http://www.culturewm.org.uk/cwmjsp/index.jsp</a>
		Regional Plan for Sport (Sport England West Midlands)	<a href="http://www.sportengland.org/westmidlands_index">http://www.sportengland.org/westmidlands_index</a>
European and International policy	Regional European and International Policy Partnership (WMRA)	West Midlands European Strategy (Regional European and International Policy Partnership)	<a href="http://www.wmra.gov.uk/page.asp?id=130">http://www.wmra.gov.uk/page.asp?id=130</a>
Rural Affairs	West Midlands Rural Affairs Forum <sup>29</sup> (GOWM)	Regional Food and Drink Cluster Delivery Plan (Advantage West Midlands)	<a href="http://www.advantagewm.co.uk/food-and-drink-plan.pdf">http://www.advantagewm.co.uk/food-and-drink-plan.pdf</a>
		Strategy for Sustainable Farming and Food delivery plan (GOWM/AWM)	<a href="http://www.farmingandfood-westmidlands.org.uk/">http://www.farmingandfood-westmidlands.org.uk/</a>
		Rural Delivery Framework (GOWM/West Midlands Rural Accord <sup>30</sup> )	<a href="http://ruralnet.typepad.com/wmrdf/">http://ruralnet.typepad.com/wmrdf/</a>

<sup>29</sup> [http://www.ruralnetworkwm.org.uk/wmraf/wmraf\\_home.htm](http://www.ruralnetworkwm.org.uk/wmraf/wmraf_home.htm)

<sup>30</sup> [http://www.ruralnetworkwm.org.uk/wmra/wmra\\_home.htm](http://www.ruralnetworkwm.org.uk/wmra/wmra_home.htm)

Policy area	Regional lead / Policy Partnership	Regional Strategies	Web link
Health	Regional Health Partnership (WMRA/Department of Health)		<a href="http://www.wmra.gov.uk/page.asp?id=34">http://www.wmra.gov.uk/page.asp?id=34</a>
Equalities and Diversity	Regional Equalities and Diversity Partnership (WMRA)  Regional Faiths Forum  Commission for Equalities and Human Rights		
Marketing the Region	Advantage West Midlands	Regional Marketing Strategy (AWM)  Regional Visitor Economy Strategy (AWM)	<a href="http://www.advantagewm.co.uk/downloads/west-midlands-marketing-strategy.pdf">http://www.advantagewm.co.uk/downloads/west-midlands-marketing-strategy.pdf</a>  <a href="http://www.advantagewm.co.uk/downloads/regional-visitor-economy-strategy.pdf">http://www.advantagewm.co.uk/downloads/regional-visitor-economy-strategy.pdf</a>
Voluntary and community sector infrastructure	West Midlands Change Up Strategy Group	Regional Infrastructure Strategy/ Regional Investment Plan	<a href="http://www.rawm.net">www.rawm.net</a> <a href="http://www.changeahead.org">www.changeahead.org</a>
Sub-regional strategies and plans	Sub-regional Partnerships Local Strategic Partnerships	Local Area Agreements	<a href="http://www.wmlga.gov.uk">http://www.wmlga.gov.uk</a>
Local strategies and plans	Local authorities	Local frameworks, strategies and plans for topic, sector and service delivery areas	<a href="http://www.wmlga.gov.uk">http://www.wmlga.gov.uk</a>

## Appendix 2: Scoping template

This template is designed to support the integration of sustainable development objectives, as expressed in his Framework, into strategies, policies and plans that are not subject to statutory Sustainability Appraisal. The aim is to help minimise the negative impacts and maximise the positive contributions of policy interventions to the achievement of regional sustainable development objectives.

This template is designed to support the scoping stage of the Framework process in helping to identify the areas where a strategy, policy or plan might impact, positively or negatively, on regional sustainable development objectives. It can also be used to identify potential measures for minimising negative impacts and maximising positive contributions; and areas where strategies, policies and plans should seek to influence other decision-makers.

Guidance and advice on completing this exercise is available from Sustainability West Midlands<sup>31</sup>.

Project/policy name	
Lead organisation & contact details for project/policy	

<sup>31</sup> <http://www.sustainabilitywestmidlands.org.uk/>

Objective	Does/can this work have an impact?	Is the impact positive or negative?	Describe the potential impact	Measures to be taken to reduce negative / increase positive impact
<b>1. Sustainable consumption and production</b>	Yes <input type="checkbox"/> No <input type="checkbox"/>	Positive <input type="checkbox"/> Negative <input type="checkbox"/>		
1.1. Use natural resources such as water and minerals efficiently, including by incorporating efficiency measures into new land use and developments, redevelopment and refurbishment	Yes <input type="checkbox"/> No <input type="checkbox"/>	Positive <input type="checkbox"/> Negative <input type="checkbox"/>		
1.2. Promote and support the development of new high value and low impact technologies, especially resource-efficient technologies and environmental technology initiatives	Yes <input type="checkbox"/> No <input type="checkbox"/>	Positive <input type="checkbox"/> Negative <input type="checkbox"/>		
1.3. Promote and ensure high standards of sustainable resource-efficient design, construction and maintenance of buildings, both new build and existing stock, where possible exceeding the requirements of the Building Regulations	Yes <input type="checkbox"/> No <input type="checkbox"/>	Positive <input type="checkbox"/> Negative <input type="checkbox"/>		
1.4. Increase use of public transport, cycling and walking as a proportion of total travel in order to reduce road traffic congestion, pollution and accidents, and improve health through increased physical activity	Yes <input type="checkbox"/> No <input type="checkbox"/>	Positive <input type="checkbox"/> Negative <input type="checkbox"/>		

<b>Objective</b>	<b>Does/can this work have an impact?</b>	<b>Is the impact positive or negative?</b>	<b>Describe the potential impact</b>	<b>Measures to be taken to reduce negative / increase positive impact</b>
1.5. Ensure development is primarily focused in the major urban areas, and makes efficient use of existing physical infrastructure and reduces need to travel, especially by private car	Yes <input type="checkbox"/> No <input type="checkbox"/>	Positive <input type="checkbox"/> Negative <input type="checkbox"/>		
1.6. Encourage and enable waste minimisation, reuse, recycling and recovery to divert resources away from the waste stream, including the use of recycled materials where possible	Yes <input type="checkbox"/> No <input type="checkbox"/>	Positive <input type="checkbox"/> Negative <input type="checkbox"/>		
1.7. Encourage local sourcing of food, goods and materials	Yes <input type="checkbox"/> No <input type="checkbox"/>	Positive <input type="checkbox"/> Negative <input type="checkbox"/>		
1.8. Reward efficient resource use and encourage development of alternative and renewable resources in order to reduce dependence on fossil fuels	Yes <input type="checkbox"/> No <input type="checkbox"/>	Positive <input type="checkbox"/> Negative <input type="checkbox"/>		
1.9. Encourage corporate social and environmental responsibility, with regional organisations and agencies leading by example	Yes <input type="checkbox"/> No <input type="checkbox"/>	Positive <input type="checkbox"/> Negative <input type="checkbox"/>		
1.10. Encourage and support a culture of enterprise and innovation, including social enterprise	Yes <input type="checkbox"/> No <input type="checkbox"/>	Positive <input type="checkbox"/> Negative <input type="checkbox"/>		
1.11. Achieve a strong, stable and sustainable economy and prosperity for the benefit of all the Region's inhabitants	Yes <input type="checkbox"/> No <input type="checkbox"/>	Positive <input type="checkbox"/> Negative <input type="checkbox"/>		

Objective	Does/can this work have an impact?	Is the impact positive or negative?	Describe the potential impact	Measures to be taken to reduce negative / increase positive impact
<b>2. Climate change and energy</b>	Yes <input type="checkbox"/> No <input type="checkbox"/>	Positive <input type="checkbox"/> Negative <input type="checkbox"/>		
2.1. Reduce overall energy use through increased energy efficiency	Yes <input type="checkbox"/> No <input type="checkbox"/>	Positive <input type="checkbox"/> Negative <input type="checkbox"/>		
2.2. Increase the proportion of energy generated from renewable and low carbon sources, including by micro-generation, CHP, district heating, and in transportation	Yes <input type="checkbox"/> No <input type="checkbox"/>	Positive <input type="checkbox"/> Negative <input type="checkbox"/>		
2.3. Minimise the Region's contribution to the causes of climate change by reducing emissions of greenhouse gases from transport, domestic, commercial and industrial sources	Yes <input type="checkbox"/> No <input type="checkbox"/>	Positive <input type="checkbox"/> Negative <input type="checkbox"/>		
2.4. Implement a managed response to the unavoidable impacts of climate change, ensuring that the design and planning process takes into account predicted changes in the Region's climate	Yes <input type="checkbox"/> No <input type="checkbox"/>	Positive <input type="checkbox"/> Negative <input type="checkbox"/>		
2.5. Land use and development that takes into account predicted changes in the Region's climate including flood risk	Yes <input type="checkbox"/> No <input type="checkbox"/>	Positive <input type="checkbox"/> Negative <input type="checkbox"/>		

Objective	Does/can this work have an impact?	Is the impact positive or negative?	Describe the potential impact	Measures to be taken to reduce negative / increase positive impact
<b>3. Natural resource protection and environmental enhancement</b>	Yes <input type="checkbox"/> No <input type="checkbox"/>	Positive <input type="checkbox"/> Negative <input type="checkbox"/>		
3.1. Value, protect, enhance and restore the Region's environmental assets, including the natural, built and historic environment and landscape	Yes <input type="checkbox"/> No <input type="checkbox"/>	Positive <input type="checkbox"/> Negative <input type="checkbox"/>		
3.2. Value, maintain, restore and re-create regional biodiversity, where possible using approaches that improve the resilience of natural systems such as linking fragmented habitats	Yes <input type="checkbox"/> No <input type="checkbox"/>	Positive <input type="checkbox"/> Negative <input type="checkbox"/>		
3.3. Minimise air, water, soil, light and noise pollution levels and create good quality air, water and soils	Yes <input type="checkbox"/> No <input type="checkbox"/>	Positive <input type="checkbox"/> Negative <input type="checkbox"/>		
3.4. Encourage land use and development that optimises the use of previously developed land and buildings	Yes <input type="checkbox"/> No <input type="checkbox"/>	Positive <input type="checkbox"/> Negative <input type="checkbox"/>		
3.5. Encourage land use and development that creates and sustains well-designed, high quality built environments that incorporate green space, encourage biodiversity, and promote local distinctiveness and sense of place	Yes <input type="checkbox"/> No <input type="checkbox"/>	Positive <input type="checkbox"/> Negative <input type="checkbox"/>		

<b>Objective</b>	<b>Does/can this work have an impact?</b>	<b>Is the impact positive or negative?</b>	<b>Describe the potential impact</b>	<b>Measures to be taken to reduce negative / increase positive impact</b>
3.6. Encourage local stewardship of local environments, for example by promoting best practice in agricultural management or enabling communities to improve their neighbourhoods	Yes <input type="checkbox"/> No <input type="checkbox"/>	Positive <input type="checkbox"/> Negative <input type="checkbox"/>		
3.7. Promote environmental justice, recognising that deprived areas and disadvantaged communities are more likely to be affected by environmental damage and degradation	Yes <input type="checkbox"/> No <input type="checkbox"/>	Positive <input type="checkbox"/> Negative <input type="checkbox"/>		
<b>4. Sustainable communities</b>	<b>Yes</b> <input type="checkbox"/> <b>No</b> <input type="checkbox"/>	<b>Positive</b> <input type="checkbox"/> <b>Negative</b> <input type="checkbox"/>		
4.1. Enable communities to influence the decisions that affect their neighbourhoods and quality of life	Yes <input type="checkbox"/> No <input type="checkbox"/>	Positive <input type="checkbox"/> Negative <input type="checkbox"/>		
4.2. Ensure easy and equitable access to services, facilities and opportunities, including jobs and learning, and that people are not disadvantaged with regard to ethnicity, gender, age, disability, faith, sexuality, background or location	Yes <input type="checkbox"/> No <input type="checkbox"/>	Positive <input type="checkbox"/> Negative <input type="checkbox"/>		
4.3. Address poverty and disadvantage, taking into account the particular difficulties of those facing multiple disadvantage	Yes <input type="checkbox"/> No <input type="checkbox"/>	Positive <input type="checkbox"/> Negative <input type="checkbox"/>		

<b>Objective</b>	<b>Does/can this work have an impact?</b>	<b>Is the impact positive or negative?</b>	<b>Describe the potential impact</b>	<b>Measures to be taken to reduce negative / increase positive impact</b>
4.4. Improve health and reduce health inequalities by encouraging and enabling healthy active lifestyles and protecting health, as well as providing equitable access to health services	Yes <input type="checkbox"/> No <input type="checkbox"/>	Positive <input type="checkbox"/> Negative <input type="checkbox"/>		
4.5. Provide decent and affordable housing for all, of the right quantity, type, tenure and affordability to meet local needs, in clean, safe and pleasant local environments	Yes <input type="checkbox"/> No <input type="checkbox"/>	Positive <input type="checkbox"/> Negative <input type="checkbox"/>		
4.6. Reduce crime, fear of crime and antisocial behaviour	Yes <input type="checkbox"/> No <input type="checkbox"/>	Positive <input type="checkbox"/> Negative <input type="checkbox"/>		
4.7. Improve opportunities to participate in the diverse cultural, sport and recreational opportunities the West Midlands can offer locally and in the wider region	Yes <input type="checkbox"/> No <input type="checkbox"/>	Positive <input type="checkbox"/> Negative <input type="checkbox"/>		
4.8. Encourage physical development with a better balance of jobs, housing, social and cultural services and amenities within each part of the Region in order to meet local needs locally and encourage stable and sustainable communities	Yes <input type="checkbox"/> No <input type="checkbox"/>	Positive <input type="checkbox"/> Negative <input type="checkbox"/>		

<b>Objective</b>	<b>Does/can this work have an impact?</b>	<b>Is the impact positive or negative?</b>	<b>Describe the potential impact</b>	<b>Measures to be taken to reduce negative / increase positive impact</b>
4.9. Ensure that the Region's workforce is equipped with the skills to access high quality employment opportunities suited to the changing needs of the Regional economy, whilst recognising the value and contribution of unpaid work	Yes <input type="checkbox"/> No <input type="checkbox"/>	Positive <input type="checkbox"/> Negative <input type="checkbox"/>		
4.10. Promote investment in future prosperity, including ongoing investment and engagement in learning and skills development	Yes <input type="checkbox"/> No <input type="checkbox"/>	Positive <input type="checkbox"/> Negative <input type="checkbox"/>		

### Appendix 3: Suggested Monitoring Indicators for RSDF Objectives

RSDF objectives	Indicators	Source	Link	Frequency of updates	Availability Regional (R) Sub-Regional (S)
1.1 Use natural resources such as water and minerals efficiently, including by incorporating efficiency measures into new land use and developments, redevelopment and refurbishment	Estimated abstractions from non-tidal surface waters and groundwaters by purpose	Environment Agency	<a href="http://www.sustainable-development.gov.uk/regional/excel/consumption-production.xls">http://www.sustainable-development.gov.uk/regional/excel/consumption-production.xls</a>		
	Estimated domestic water consumption per household.	Owat	<a href="http://www.sustainable-development.gov.uk/regional/excel/consumption-production.xls">http://www.sustainable-development.gov.uk/regional/excel/consumption-production.xls</a>		
	Secondary/recycled materials sold as aggregates (million tonnes)	West Midlands Regional Aggregates Working Party	<a href="http://www.communities.gov.uk/index.asp?id=1502818">http://www.communities.gov.uk/index.asp?id=1502818</a>		
1.2. Promote and support the development of new high value and low impact technologies, especially resource-efficient technologies and environmental technology initiatives	CO <sub>2</sub> emissions by £10,000 GVA	West Midlands Regional Observatory (Environmental Accounts, ONS Regional Accounts, ONS)	<a href="http://www.statistics.gov.uk/statbase/Expodata/Spreadsheets/D5695.xls">http://www.statistics.gov.uk/statbase/Expodata/Spreadsheets/D5695.xls</a>  <a href="http://www.statistics.gov.uk/downloads/theme_economy/NUTS1_Tables_1-8.xls">http://www.statistics.gov.uk/downloads/theme_economy/NUTS1_Tables_1-8.xls</a>		
1.3. Promote and ensure high standards of sustainable resource efficient design, construction and maintenance of	Proportion of homes built to Code of Sustainable Homes level 3 standard. <i>Local authority planning departments do not currently collect this information but are likely to do so in the future.</i>				

<b>RSDF objectives</b>	<b>Indicators</b>	<b>Source</b>	<b>Link</b>	<b>Frequ ncy of update s</b>	<b>Availabil ity Regional (R) Sub- Regional (S)</b>
buildings, both new build and existing stock, where possible exceeding the requirements of the Building Regulations	Construction waste arisings	Department for Communities and Local Government	<a href="http://www.communities.gov.uk/index.asp?id=1508123">http://www.communities.gov.uk/index.asp?id=1508123</a>		
1.4. Increase use of public transport, cycling and walking as a proportion of total travel in order to reduce road traffic congestion, pollution, and accidents, and improve health through increased physical activity	(a) Number of trips per person by mode (b) Distance travelled per person per year by broad trip purpose	Department for Transport	<a href="http://www.sustainable-development.gov.uk/regional/excel/sustainable-communities.xls">http://www.sustainable-development.gov.uk/regional/excel/sustainable-communities.xls</a>		
	How children get to school	Department for Transport	<a href="http://www.sustainable-development.gov.uk/regional/excel/sustainable-communities.xls">http://www.sustainable-development.gov.uk/regional/excel/sustainable-communities.xls</a>		
	Average distance travelled by mode of travel (walk, car driver, car passenger, other private, local bus, other public, all modes) by region of residence (miles per person per year)	National Travel Survey, Department for Transport	<a href="http://www.dft.gov.uk/172974/173025/221412/221541/231675/231701/1personaltravel">http://www.dft.gov.uk/172974/173025/221412/221541/231675/231701/1personaltravel</a>		
	Usual method of travel to work (car, motorcylce, bicycle, bus/coarch, national rail, other rail, all rail) by region of residence - GO Region	Labour Force Survey	<a href="http://www.dft.gov.uk/172974/173025/221412/221541/231675/231701/1personaltravel">http://www.dft.gov.uk/172974/173025/221412/221541/231675/231701/1personaltravel</a>		
1.5. Ensure development is primarily focused in the major urban areas, and makes	Urban land not previously developed changing to residential use	Land Use Change Statistics	<a href="http://www.communities.gov.uk/pub/818/LUCS22Tables_id1510818.xls">http://www.communities.gov.uk/pub/818/LUCS22Tables_id1510818.xls</a>		
	Percentage of housing completions on previously developed land	AMR	<a href="http://www.wmra.gov.uk/page.asp?id=47">http://www.wmra.gov.uk/page.asp?id=47</a>		

<b>RSDF objectives</b>	<b>Indicators</b>	<b>Source</b>	<b>Link</b>	<b>Frequ ncy of update s</b>	<b>Availabil ity Regional (R) Sub- Regional (S)</b>
efficient use of existing physical infrastructure and reduces need to travel, especially by private car	Completions and supply of employment land by major urban area	Regional Housing Land Availability Survey (In RSS)	<a href="http://www.communities.gov.uk/pub/66/Table253_id1156066.xls">http://www.communities.gov.uk/pub/66/Table253_id1156066.xls</a>		
	Housing completions within and beyond Major Urban Areas	AMR			
	Re-use of Land & Buildings for Housing	AMR			
	Rate of employment land completions within regeneration zones	AMR			
	Employment land completions by greenfield / brownfield sites	AMR			
1.6. Encourage and enable waste minimisation, reuse, recycling and recovery to divert resources away from the waste stream, including the use of recycled materials where possible	Waste arisings by disposal and sector	Defra, Environment Agency	<a href="http://www.sustainable-development.gov.uk/regional/excel/consumption-production.xls">http://www.sustainable-development.gov.uk/regional/excel/consumption-production.xls</a>		
	Household waste and recycling	Defra	<a href="http://www.sustainable-development.gov.uk/regional/excel/consumption-production.xls">http://www.sustainable-development.gov.uk/regional/excel/consumption-production.xls</a>		

<b>RSDF objectives</b>	<b>Indicators</b>	<b>Source</b>	<b>Link</b>	<b>Frequ ncy of update s</b>	<b>Availabil ity Regional (R) Sub- Regional (S)</b>
1.7. Encourage local sourcing of food, goods and materials	This appears to be an objective with limited scope quantitative measurement. However, a potential measure for geography of supply chains could be food miles. This would require additional analysis to reflect regional requirements. Another potential source of evidence could be case studies of local box schemes	Defra; DfT	A report commissioned by Defra discussing the issue of food miles can be found at <a href="http://statistics.defra.gov.uk/esg/reports/foodmiles/default.asp">http://statistics.defra.gov.uk/esg/reports/foodmiles/default.asp</a>  Local box schemes source <a href="http://www.localfoodworks.org/">http://www.localfoodworks.org/</a>		
1.8. Reward efficient resource use and encourage development of alternative and renewable resources in order to reduce dependence on fossil fuels	Renewable energy generating capacity by type	Restats	<a href="http://www.restats.org.uk/">http://www.restats.org.uk/</a>		
	Average energy (electricity/gas) consumed	BERR Energy Statistics	<a href="http://www.dti.gov.uk/energy/statistics/regional/index.html">http://www.dti.gov.uk/energy/statistics/regional/index.html</a>		
	SAP rating	DCLG	<a href="http://www.neighbourhood.statistics.gov.uk/dissemination/datasetList.do?Contract34=1&amp;\$ph=60&amp;updateRequired=true&amp;step=1&amp;CurrentTreeIndex=-2#34">http://www.neighbourhood.statistics.gov.uk/dissemination/datasetList.do?Contract34=1&amp;\$ph=60&amp;updateRequired=true&amp;step=1&amp;CurrentTreeIndex=-2#34</a>		
1.9. Encourage corporate social and environmental responsibility, with regional organisations and agencies leading by example	This appears to be an objective with limited scope quantitative measurement. A possible suggested measure could be a survey of attitudes and actions on sustainable development among the key stakeholders in business and local and regional government.				

<b>RSDF objectives</b>	<b>Indicators</b>	<b>Source</b>	<b>Link</b>	<b>Frequ ncy of update s</b>	<b>Availabil ity Regional (R) Sub- Regional (S)</b>
1.10. Encourage and support a culture of enterprise and innovation, including social enterprise	Number of VAT registrations for new businesses	Small Business Service	<a href="http://www.dtistats.net/smes/vat/">http://www.dtistats.net/smes/vat/</a>		
	Number of VAT deregistrations	Small Business Service	<a href="http://www.dtistats.net/smes/vat/">http://www.dtistats.net/smes/vat/</a>		
	Number of people seeking advice from Business Links	Advantage West Midlands? Business Link Gateway	We need to speak with AWM regarding access to their management information data.		
1.11. Achieve a strong, stable, and sustainable economy and prosperity for the benefit of all the Region's inhabitants	GVA per capita	ONS	<a href="http://www.statistics.gov.uk/downloads/theme_economy/NUTS1_Tables_1-8.xls">http://www.statistics.gov.uk/downloads/theme_economy/NUTS1_Tables_1-8.xls</a>		
	GVA growth rates	ONS			
	Worklessness (% of working age population claiming Working Age Client Group Benefits)	DWP			
2.1. Reduce overall energy use through increased energy efficiency	CO <sub>2</sub> per capita (production based and consumption based)	West Midlands Regional Observatory	Data sourced from Defra for production measures and REAP for consumption based measures		
	Average energy (electricity/gas) consumed (see also 1.8 above)	BERR Energy Statistics	<a href="http://www.dti.gov.uk/energy/statistics/regional/index.html">http://www.dti.gov.uk/energy/statistics/regional/index.html</a>		
	SAP rating (see also 1.8 above)	DCLG	<a href="http://www.neighbourhood.statistics.gov.uk/dissemination/dataSetList.do?Contract34=1&amp;\$ph=60&amp;updateRequired=true&amp;step=1&amp;CurrentTreeIndex=-2#34">http://www.neighbourhood.statistics.gov.uk/dissemination/dataSetList.do?Contract34=1&amp;\$ph=60&amp;updateRequired=true&amp;step=1&amp;CurrentTreeIndex=-2#34</a>		

<b>RSDF objectives</b>	<b>Indicators</b>	<b>Source</b>	<b>Link</b>	<b>Frequ ncy of update s</b>	<b>Availabil ity Regional (R) Sub- Regional (S)</b>	
2.2. Increase the proportion of energy generated from renewable and low carbon sources, including by micro-generation, CHP, district heating, and in transportation	Renewable energy generating capacity by type	Restats	<a href="http://www.restats.org.uk/">http://www.restats.org.uk/</a>			
2.3. Minimise the Region's contribution to the causes of climate change by reducing emissions of greenhouse gases from transport, domestic, commercial and industrial sources	Global warming potential from Environment Agency regulated industrial premises.	Environment Agency	<a href="http://www.environment-agency.gov.uk/business/444255/446867/255244/255281/259459/259739/">http://www.environment-agency.gov.uk/business/444255/446867/255244/255281/259459/259739/</a>			
	Greenhouse gas emission (national figures)	Environmental accounts, ONS	<a href="http://www.statistics.gov.uk/statbase/Expodata/Spreadsheets/D5695.xls">http://www.statistics.gov.uk/statbase/Expodata/Spreadsheets/D5695.xls</a>			
	Nitrogen Oxide NOx	DEFRA	<a href="http://neighbourhood.statistics.gov.uk/dissemination/DownloadData.zip?%24ph=60_61_65&amp;step=6&amp;downloadLargeFile=true&amp;fileIndex=0">http://neighbourhood.statistics.gov.uk/dissemination/DownloadData.zip?%24ph=60_61_65&amp;step=6&amp;downloadLargeFile=true&amp;fileIndex=0</a>			
	Domestic energy use	BERR Energy Statistics	<a href="http://www.dti.gov.uk/energy/statistics/regional/index.html">http://www.dti.gov.uk/energy/statistics/regional/index.html</a>			
	Usual method of travel to work by resident population	Labour Force Survey			Quarterly	
	Usual home to work travel time in minutes See also 1.4	Labour Force Survey			Every Autumn quarter	

<b>RSDF objectives</b>	<b>Indicators</b>	<b>Source</b>	<b>Link</b>	<b>Frequency of updates</b>	<b>Availability Regional (R) Sub-Regional (S)</b>
2.4. Implement a managed response to the unavoidable impacts of climate change, ensuring that the design and planning process takes into account predicted changes in the Region's climate	Qualitative objective – no indicators available				
2.5. Land use and development that takes into account predicted changes in the Region's climate including flood risk	Planning applications approved contrary to Environment Agency advice	Environment Agency (quoted in RSS annual monitoring report)	<a href="http://www.wmra.gov.uk/page.asp?id=52">http://www.wmra.gov.uk/page.asp?id=52</a>		
3.1. Value, protect, enhance and restore the Region's environmental assets, including the natural, built and historic environment and landscape	Development in green belt areas	Land Use Change Statistics	<a href="http://www.communities.gov.uk/pub/818/LUCS22Tables_id1510818.xls">http://www.communities.gov.uk/pub/818/LUCS22Tables_id1510818.xls</a>		
	Listed buildings and scheduled ancient monuments at risk.	Buildings at Risk Register	<a href="http://www.english-heritage.org.uk/upload/pdf/BAR_summary_2007.pdf">http://www.english-heritage.org.uk/upload/pdf/BAR_summary_2007.pdf</a>		
	Percentage area of SSSI's in favourable / recovering condition	Natural England	<a href="http://www.wmra.gov.uk/page.asp?id=52">http://www.wmra.gov.uk/page.asp?id=52</a>		
3.2. Value, maintain, restore and re-create regional biodiversity, where possible using approaches that improve the	Bird population indices (a) farmland birds (b) woodland birds	Defra e-digest statistics	<a href="http://www.defra.gov.uk/environment/statistics/wildlife/research/rwbi.htm">http://www.defra.gov.uk/environment/statistics/wildlife/research/rwbi.htm</a>		
	Assessment of local environmental quality	Defra, ENCAMS	<a href="http://www.sustainable-development.gov.uk/regional/excel/sustainable-communities.xls">http://www.sustainable-development.gov.uk/regional/excel/sustainable-communities.xls</a>		

RSDf objectives	Indicators	Source	Link	Frequency of updates	Availability Regional (R) Sub-Regional (S)
resilience of natural systems such as linking fragmented habitats	<i>Indicator under development by West Midlands Biodiversity Partnership but unlikely to be available before 2009 - Work being undertaken to develop GIS data on biodiversity habitats, would give an overview of areas in West Midlands where BAP habitats are increasing and decreasing.</i>		No web link		
3.3. Minimise air, water, soil, light and noise pollution levels and create good quality air, water and soils	Tranquillity maps	CPRE	<a href="http://www.cpre.org.uk/campaigns/landscape/tranquillity/county-tranquillity-maps">http://www.cpre.org.uk/campaigns/landscape/tranquillity/county-tranquillity-maps</a>		
	Emissions of air pollutants	Defra	<a href="http://www.sustainable-development.gov.uk/regional/excel/natural-resources.xls">http://www.sustainable-development.gov.uk/regional/excel/natural-resources.xls</a>		
	Rivers of good (a) biological (b) chemical quality	Environment Agency	<a href="http://www.defra.gov.uk/environment/statistics/inlwater/">http://www.defra.gov.uk/environment/statistics/inlwater/</a>		
	Percentage of household waste recycled and household waster collection (kg per head)	Audit Commission	<a href="http://www.bvpi.gov.uk">http://www.bvpi.gov.uk</a>	Annually	
3.4. Encourage land use and development that optimises the use of previously developed land and buildings	New dwellings built on previously developed land or through conversions	Land Use Change statistics	<a href="http://www.communities.gov.uk/pub/818/LUCS22Tables_id1510818.xls">http://www.communities.gov.uk/pub/818/LUCS22Tables_id1510818.xls</a>		
	Employment land completions by Greenfield / brownfield sites / the supply of employment land by Greenfield / brownfield sites	AMR			

RSDF objectives	Indicators	Source	Link	Frequency of updates	Availability Regional (R) Sub-Regional (S)
3.5. Encourage land use and development that creates and sustains well-designed, high quality built environments that incorporate green space, encourage biodiversity, and promote local distinctiveness and sense of place	Proportion of dwelling stock that is unfit	Department for Communities and Local Government (CLG)	<a href="http://neighbourhood.statistics.gov.uk/dissemination/">http://neighbourhood.statistics.gov.uk/dissemination/</a>	Annually	
3.6. Encourage local stewardship of local environments, for example by promoting best practice in agricultural management or enabling communities to improve their neighbourhoods	<i>Indicator may be developed by Natural England – Agri-environment schemes data may be available in the future on level of funding given to individual Agri-environment schemes</i>				

RSDF objectives	Indicators	Source	Link	Frequency of updates	Availability Regional (R) Sub-Regional (S)
3.7. Promote environmental justice, recognising that deprived areas and disadvantaged communities are more likely to be affected by environmental damage and degradation	<i>Indicator may be developed by the Environment Agency who are undertaking research into the potential for a physical domain of the Index of Multiple Deprivation.</i>				
4.1. Enable communities to influence the decisions that affect their neighbourhoods and quality of life	A Best Value Performance Indicators (BVPI) was reported by the Audit Commission. It is noted, however, that it has not been included in the current reporting schedule for BVPI	Audit Commission			
4.2. Ensure easy and equitable access to services, facilities and opportunities, including jobs and learning, and that people are not disadvantaged with regard to ethnicity, gender, age, disability, faith, sexuality,	People of working age in employment	Annual Population Survey	<a href="http://www.nomisweb.com/">http://www.nomisweb.com/</a>		
	Access to services <i>There is some data on location of schools; data could be added for socio-economic concentrations</i>	Commission for Rural Communities	<a href="http://www.ruralcommunities.gov.uk/themes/~data">http://www.ruralcommunities.gov.uk/themes/~data</a>		
	Proportion of young people (16-24 year olds) in full-time education or employment	Department for Education and Skills			
	Percentage of 15 year old pupils in schools maintained by the local authority achieving five or more GCSEs at grades A-C or equivalent	Audit Commission			

<b>RSDF objectives</b>	<b>Indicators</b>	<b>Source</b>	<b>Link</b>	<b>Frequency of updates</b>	<b>Availability Regional (R) Sub-Regional (S)</b>
background or location	Percentage of people surveyed finding it easy to access key local services	Audit Commission			
	Percentage of people surveyed who feel that their area is a place where people from different backgrounds get on well together (sources: Audit Commission).	Audit Commission			
4.3. Address poverty and disadvantage, taking into account the particular difficulties of those facing multiple disadvantage	Population living in workless households (a) working age (b) children	ONS Labour Force Survey	<a href="http://www.sustainable-development.gov.uk/regional/excel/sustainable-communities.xls">http://www.sustainable-development.gov.uk/regional/excel/sustainable-communities.xls</a>		
	16-18 year olds not in employment, education or training	Department for Education and Skills	<a href="http://www.sustainable-development.gov.uk/regional/excel/sustainable-communities.xls">http://www.sustainable-development.gov.uk/regional/excel/sustainable-communities.xls</a>		
	Proportion of working age population on incapacity benefit	Department for Work and Pensions, ONS Mid-year population estimates	<a href="http://193.115.152.21/NESS/WACG/wacg.htm">http://193.115.152.21/NESS/WACG/wacg.htm</a>  <a href="http://www.statistics.gov.uk/statbase/explorer.asp?CTG=3&amp;SL=&amp;E=4819#4819">http://www.statistics.gov.uk/statbase/explorer.asp?CTG=3&amp;SL=&amp;E=4819#4819</a>		
4.4. Improve health and reduce health inequalities by encouraging and enabling healthy active lifestyles and protecting health, as well as providing	Healthy life expectancy (a) men and (b) women, by NHS Executive Regional Office, as defined at 1st April 1999	Department for Health	<a href="http://www.sustainable-development.gov.uk/regional/excel/sustainable-communities.xls">http://www.sustainable-development.gov.uk/regional/excel/sustainable-communities.xls</a>		
	Prevalence of cigarette smoking (a) all adults (b) 'manual and non-manual' socio-economic groups	General Household Survey, Office for National Statistics	<a href="http://www.sustainable-development.gov.uk/regional/excel/sustainable-communities.xls#Smoking!A1">http://www.sustainable-development.gov.uk/regional/excel/sustainable-communities.xls#Smoking!A1</a>		

RSDf objectives	Indicators	Source	Link	Frequency of updates	Availability Regional (R) Sub-Regional (S)
equitable access to health services	Prevalence of obesity in 2-10 year olds <sup>ii</sup>	Department of Health	<a href="http://www.ic.nhs.uk/webfiles/publications/opan06/obesity%2C%20physical%20activity%20and%20diet%20tables.xls">http://www.ic.nhs.uk/webfiles/publications/opan06/obesity%2C%20physical%20activity%20and%20diet%20tables.xls</a>		
	% of adults not involved in sport	The Active People Survey, Sport England	<a href="http://www.webreport.se/apd/login.aspx?">http://www.webreport.se/apd/login.aspx?</a>		
4.5. Provide decent and affordable housing for all, of the right quantity, type, tenure and affordability to meet local needs, in clean, safe and pleasant local environments	Housing stock split and housing completions split	Department for Communities and Local Government	<a href="http://www.communities.gov.uk/index.asp?id=1156006">http://www.communities.gov.uk/index.asp?id=1156006</a>		
	Number of dwellings in the lowest council tax band				
4.6. Reduce crime, fear of crime and antisocial behaviour	Burglary per 10,000 households, vehicle theft per 10,000 households and BCS violence per 10,000 adults.	British Crime Survey (tables 6.08, 6.09, 6.10)	<a href="http://www.homeoffice.gov.uk/rds/pdfs07/hosb1107.pdf">http://www.homeoffice.gov.uk/rds/pdfs07/hosb1107.pdf</a>		
	High level of worry about burglary, car crime and violent crime	British Crime Survey	<a href="http://www.homeoffice.gov.uk/rds/pdfs07/hosb1107.pdf">http://www.homeoffice.gov.uk/rds/pdfs07/hosb1107.pdf</a>		
	High level of perceived antisocial behaviour	British Crime Survey	<a href="http://www.homeoffice.gov.uk/rds/pdfs07/hosb1107.pdf">http://www.homeoffice.gov.uk/rds/pdfs07/hosb1107.pdf</a>		
4.7. Improve opportunities to participate in the diverse cultural, sport and recreational opportunities the	At least 3 days a week x 30 minutes moderate participation (all adults)	The Active People Survey, Sport England	<a href="http://www.webreport.se/apd/login.aspx?">http://www.webreport.se/apd/login.aspx?</a>		
	Percentage of Region's adults who attended at least one (or potentially two as per WMES) type of cultural activity/site in the past 12 months	Taking Part, The National Survey of Culture, Leisure and Sport	<a href="http://www.culture.gov.uk/Reference_library/Research/taking_part_survey/surveyoutputs_previous.htm">http://www.culture.gov.uk/Reference_library/Research/taking_part_survey/surveyoutputs_previous.htm</a>		

<b>RSDF objectives</b>	<b>Indicators</b>	<b>Source</b>	<b>Link</b>	<b>Frequ ncy of update s</b>	<b>Availabil ity Regional (R) Sub- Regional (S)</b>
West Midlands can offer locally and in the wider region	Number of sports facilities by type	Sport England Active Places database	<a href="http://www.activeplacespower.com/">http://www.activeplacespower.com/</a>		
4.8. Encourage physical development with a better balance of jobs, housing, social and cultural services and amenities within each part of the Region in order to meet local needs locally and encourage stable and sustainable communities	Usual method of travel to work by resident population	Labour Force Survey		Quarterly	
4.9. Ensure that the Region's workforce is equipped with the skills to access high quality <sup>iii</sup> employment opportunities suited to the changing needs of the Regional economy, whilst recognising the value and contribution of unpaid work	Proportion of the working age population qualified to NVQ Level 3 and above	Labour Force Survey			
	Proportion of staff deemed to have skill deficiencies by their employers	LSC National Employer Skills Survey (bi-annual)	<a href="http://www.wmro.org/resources/res.aspx/CmsResource/resourceFilename/1104/Regional-Skills-Assessment-2006-Dataset_V1.0_Dataset_AP.xls">http://www.wmro.org/resources/res.aspx/CmsResource/resourceFilename/1104/Regional-Skills-Assessment-2006-Dataset_V1.0_Dataset_AP.xls</a>		
	Density of skill shortage vacancies <sup>iv</sup>	LSC National Employer Skills Survey (bi-annual)	<a href="http://researchtools.lsc.gov.uk/ness/home/home.asp?LoggingIn=TempVar">http://researchtools.lsc.gov.uk/ness/home/home.asp?LoggingIn=TempVar</a>		

<b>RSDf objectives</b>	<b>Indicators</b>	<b>Source</b>	<b>Link</b>	<b>Frequ ncy of update s</b>	<b>Availabil ity Regional (R) Sub- Regional (S)</b>
4.10. Promote investment in future prosperity, including ongoing investment and engagement in learning and skills development <sup>v</sup>	Proportion of companies investing in training over the last 12 months (again NESS data on a bi-annual basis)	LSC National Employer Skills Survey (bi-annual)	<a href="http://researchtools.lsc.gov.uk/ness/home/home.asp?LoggingIn=TempVar">http://researchtools.lsc.gov.uk/ness/home/home.asp?LoggingIn=TempVar</a>		
	Proportion of working age population receiving work related/vocational training in the last 4 weeks.	Labour Force Survey/Annual Population Survey	<a href="http://www.nomisweb.com/">http://www.nomisweb.com/</a>		
	Foreign inward investment in the West Midlands	Advantage West Midlands			

## Endnotes

<sup>1</sup> Frequency of updates will be added to table in due course

<sup>1</sup> No guarantee that this indicator will be available over a time series. The Health Survey for England has a different health focus every year, which means in some years it has a boost sample as well as a core sample. In the years where there is a specific boost sample, such as the 2002 HSE which had a focus on the health of children and young people, the core sample is normally smaller in size. This can lead to problems when splitting data collected, such as obesity, by demographic variables, such as GOR due to smaller sample sizes as the core sample isn't large enough to facilitate lower level splits. In 2003 the health focus was risk factors for cardiovascular disease and so there was no specific boost sample in the HSE, which is why obesity at GOR level was published in the HSE report. The 2004 HSE focused on the health of Ethnic minorities and the 2005 HSE focused on the health of older people. The Department for Health think the sample sizes may be large enough to allow a split by GOR for these two years but won't know for definite until they get to that stage in our analysis for the December publication.

<sup>1</sup> NVQ3 is seen to be the basis of a world class workforce. This could be changed to NVQ4 and above depending on the definition used for 'high quality employment opportunities'

<sup>1</sup> This is a measure of how many vacancies are considered to exist due to skill shortages within the applicants for them

<sup>1</sup> There are other indicators that could be used also, such as number of days training per employee (NESS), training spend per employee (NESS) but these are lower level indicators in the Skills team's work rather than all the above which are Tier 2 so more identifiable as 'headline' work in this area.

---

<sup>i</sup> Frequency of updates will be added to table in due course

<sup>ii</sup> No guarantee that this indicator will be available over a time series. The Health Survey for England has a different health focus every year, which means in some years it has a boost sample as well as a core sample. In the years where there is a specific boost sample, such as the 2002 HSE which had a focus on the health of children and young people, the core sample is normally smaller in size. This can lead to problems when splitting data collected, such as obesity, by demographic variables, such as GOR due to smaller sample sizes as the core sample isn't large enough to facilitate lower level splits. In 2003 the health focus was risk factors for cardiovascular disease and so there was no specific boost sample in the HSE, which is why obesity at GOR level was published in the HSE report. The 2004 HSE focused on the health of Ethnic minorities and the 2005 HSE focused on the health of older people. The Department for Health think the sample sizes may be large enough to allow a split by GOR for these two years but won't know for definite until they get to that stage in our analysis for the December publication.

<sup>iii</sup> NVQ3 is seen to be the basis of a world class workforce. This could be changed to NVQ4 and above depending on the definition used for 'high quality employment opportunities'

<sup>iv</sup> This is a measure of how many vacancies are considered to exist due to skill shortages within the applicants for them

<sup>v</sup> There are other indicators that could be used also, such as number of days training per employee (NESS), training spend per employee (NESS) but these are lower level indicators in the Skills team's work rather than all the above which are Tier 2 so more identifiable as 'headline' work in this area.