



West Midlands RSS Phase 2 – Sustainability Appraisal and Habitats Regulations Assessment

Anthony Wright, URSUS Consulting Ltd

26 July 2007

SA/SEA and HRA

- **Sustainability Appraisal:**

- Appraise economic, social and environmental implications
- Based on RSDF
- Identify pros and cons, winners and losers, trade-offs
- Maximise benefits
- Identify critical sustainability issues – mitigate

- **Habitats Regulations Assessment**

- Assess impacts on 'European Sites'
- Identify whether the plan has an adverse effect on any sites
- Proposals can only be adopted if no significant effect is likely

SA – work so far

- **Draft policies emerging since 29 June**
- **Appraising each new policy against SA Framework**
- **Initial appraisals completed:**
 - Communities for the Future (ie housing)
 - Sustainable Construction and Sustainable Communities
 - Prosperity for All: RLSs, Centres, Offices, Casinos
 - Transport and Accessibility
 - Waste
- **To be done:**
 - Employment land

SA – findings

- **Housing/Sustainable Communities:**

- Supportive of urban and rural renaissance objectives – phasing
- Proportion of households in MUAs will fall by 2026 – from 54.3% to 52.9%
- Undersupply of housing in 17 districts, oversupply in 14 districts
- Significant environmental pressures arising:
 - Housing stock CO2 will rise, even if houses built to high standards
 - Water headroom deficits in Birmingham, Severn and South Staffordshire zones
 - Wastewater infrastructure at risk in MUAs
 - 84,800 houses on non-PDL (2,260ha)

- **Recommendations/mitigation:**

- Greater use of standards?
- Code for Sustainable Homes (level 4?)
- Targets for embedded renewable energy
- Checklist West Midlands
- Larger scale ‘sustainable urban extensions’?
- CABI ‘Building for Life’ standard/Essex Design Guide

SA – findings

- **Waste:**
 - Broadly supportive of sustainable waste management principles
 - Some changes to individual policies suggested
- **Transport:**
 - Four new policies appraised
 - Overall implications of ‘Transport and Accessibility’ not yet assessed
- **Centres:**
 - Supportive of urban renaissance objectives
 - Strong employment and economic development benefits
 - Stronger links between Centres and ‘Transport and Accessibility’ policies need to be made
- **Regional Logistics Sites:**
 - Supportive of increased rail freight
 - Road freight will also continue to increase
 - Provides significant numbers of jobs

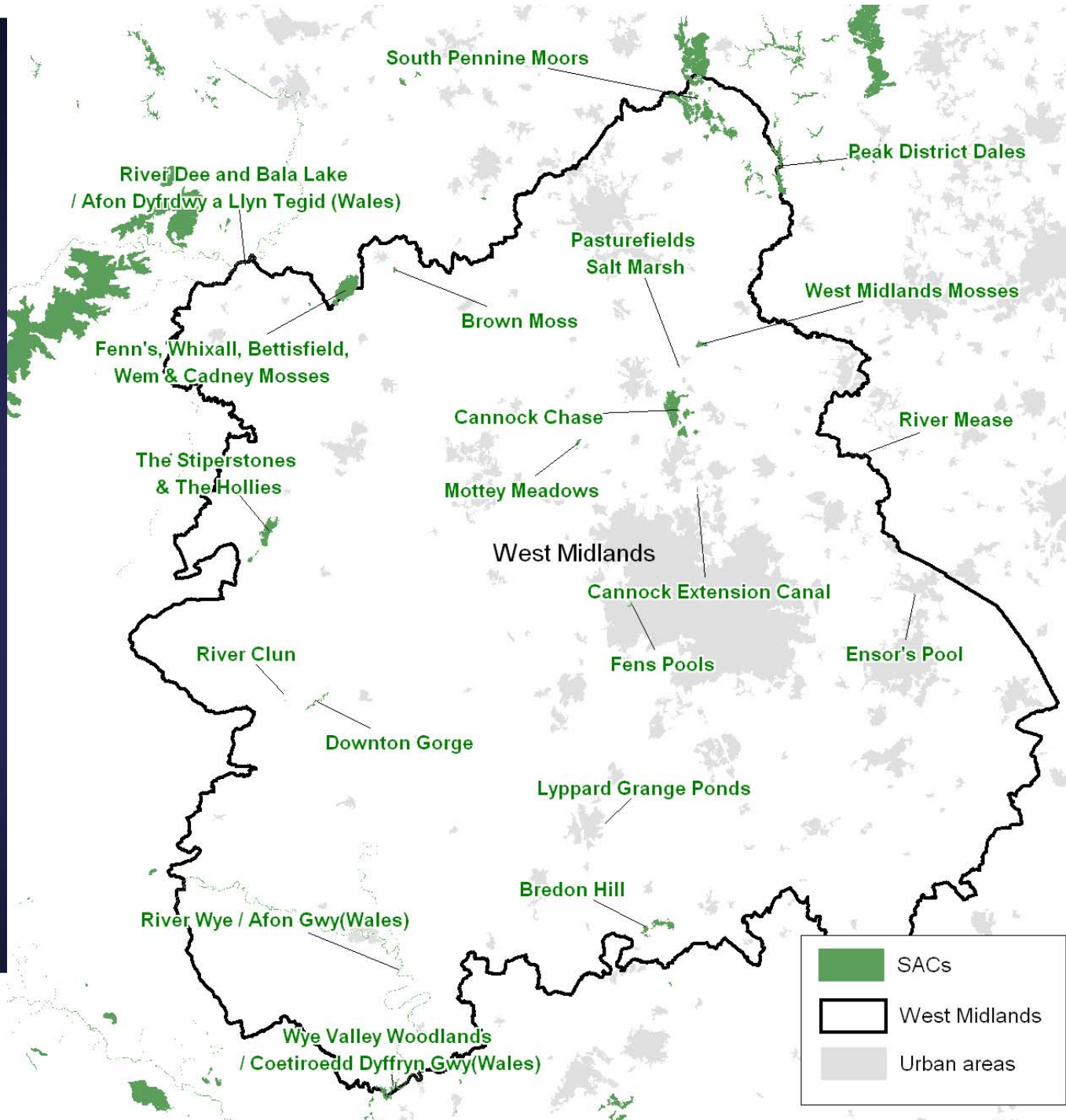
SA – next steps

- **Initial Appraisal Report next Friday**
- **More detailed appraisal work:**
 - Sub-regional issues
 - Infrastructure requirements
 - Transport
 - Links between housing and economy
 - Housing need, affordable housing, social housing
 - Phasing

HRA – work so far

Stage 1: Screening

- Identified and analysed sites inside and outside the Region – current status, threats etc



HRA – work so far

Stage 1: Screening

- Identified and analysed sites inside and outside the Region – current status, threats etc
- Assessed likely pressures arising from draft policies
- Developed an understanding of links between pressures and sites
- Stakeholder workshop 12 July – NE, EA, CCW, planning authorities and other experts
- Determined whether the Plan is likely to have a significant effect on each of the sites (alone or ‘in combination’ with other plans)
- ‘Screened out’ eight sites
- 22 sites identified where significant effects may be likely – now subject to the next stage

HRA – work so far

- **Pressures/drivers affecting sites:**
 - Air pollution from local traffic
 - Diffuse air pollution
 - Water pollution from surface run-off or flooding
 - Land use change around the site
 - Water abstraction
 - Water quality
 - Recreation/amenity use causing disturbance or erosion

HRA – next steps

Stage 2: Appropriate Assessment

- More detailed review of each site and pressures arising from Plan
- Identify sites which will be affected by the Plan – ‘show-stoppers’
- Develop mitigation measures (ie changes to the Preferred Option) to address those effects