



West Midlands RSS Phase 2 – Sustainability Appraisal and Habitats Regulations Assessment

Anthony Wright, URSUS Consulting Ltd

6 June 2007

SA and HRA

**Sustainability
Appraisal**

**Habitats
Regulations
Assessment**

SA and HRA

Sustainability
Appraisal →

Habitats
Regulations
Assessment

- Statutory process
- Appraise economic, social and environmental implications of a plan
- Identify effects – positive and negative
- Mitigate negative and maximise positive impacts
- Ongoing since 2005
- Appraised the implications of the Options Paper

SA and HRA

**Sustainability
Appraisal** →

**Ensure that the Plan contributes to
Sustainable Development
Improve the quality of the Plan**

**Habitats
Regulations
Assessment**

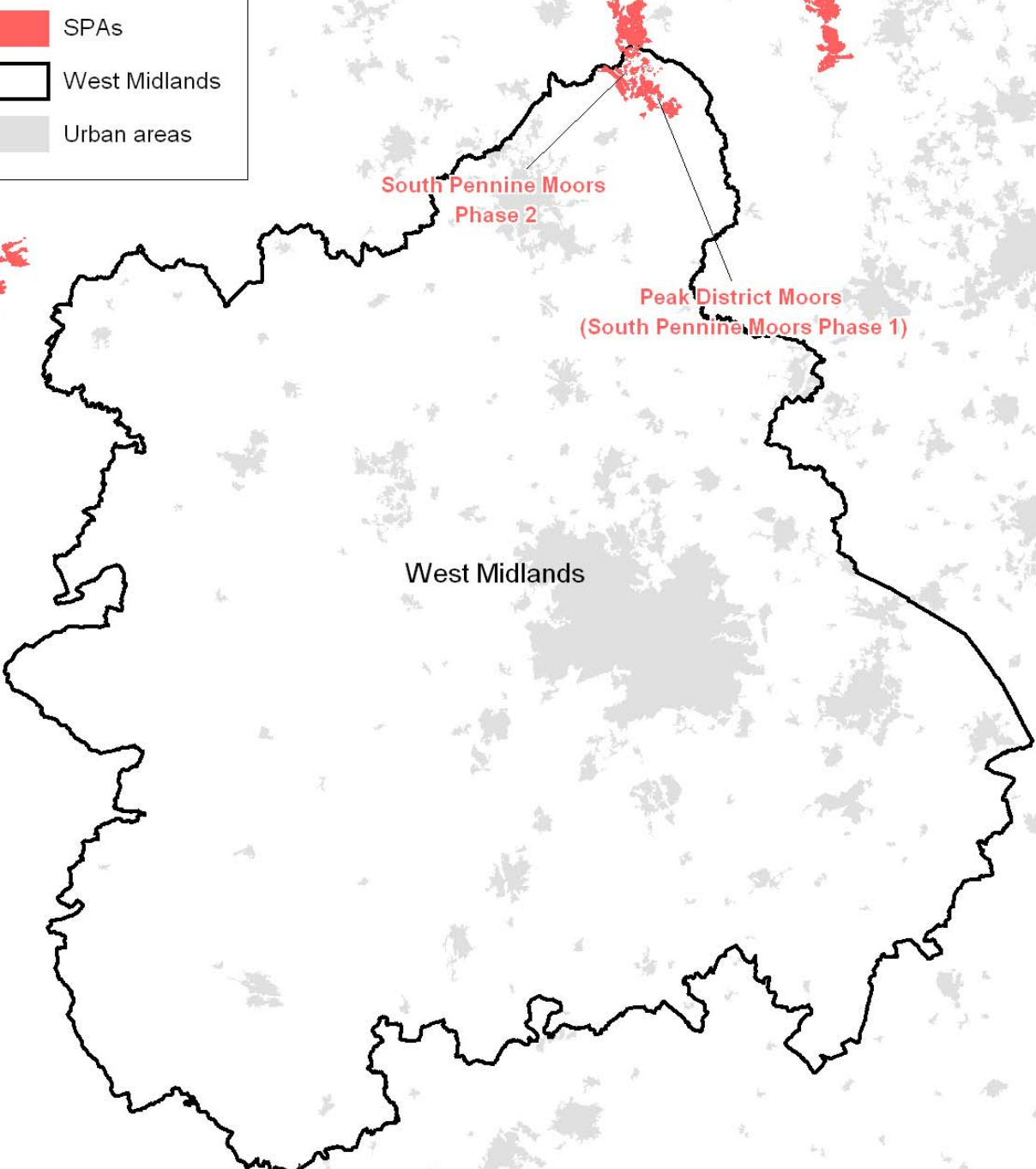
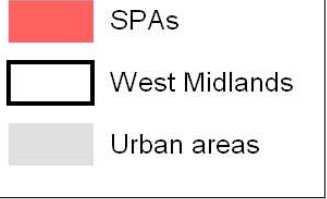
SA and HRA

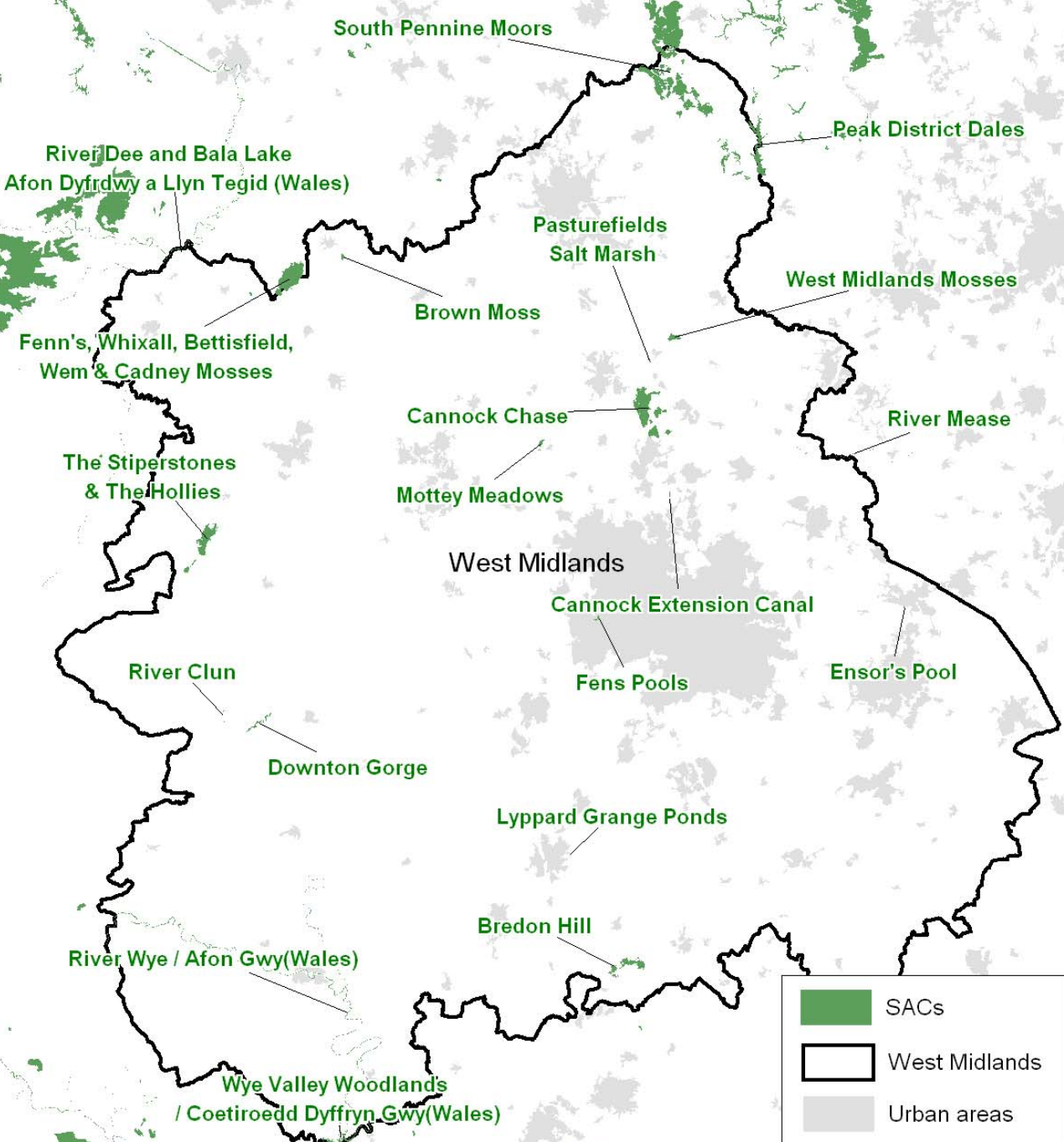
Sustainability Appraisal

Habitats Regulations Assessment



- Statutory process
- Assess whether a plan could have an adverse effect on specific sites
 - SACs
 - SPAs
 - Ramsar sites
- Protect the integrity of those sites
- Plan can only be approved if **NO** adverse effects on the sites
- Ensure that effects are **AVOIDED** by changing the plan
- Assessing the Preferred Option

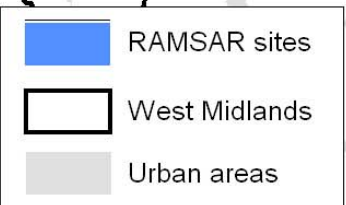




Midland Meres & Mosses
(Phase 2)

Midland Meres & Mosses
(Phase 1)

West Midlands



SA and HRA

Sustainability Appraisal → **Ensure that the Plan contributes to Sustainable Development**
Improve the quality of the Plan

**Habitats
Regulations
Assessment**

SA and HRA

Sustainability Appraisal → **Ensure that the Plan contributes to Sustainable Development**
Improve the quality of the Plan

Habitats Regulations Assessment → **Ensure that the Plan does not have any adverse effect on the integrity of the protected sites**

SA findings to date

- **Higher growth rate (575,000 dwellings) likely to:**
 - weaken the process of Urban Renaissance
 - require a minimum of 205,665 dwellings on non-PDL (5,786ha)
 - 6.9% increase in regional household CO2 emissions; 28% reduction if strict policies applied
 - cause short/medium term deficits in water supplies
 - increase municipal waste arisings by 22%-25%
 - put pressure on historic and built environment
 - put pressure on the availability of employment land

 - meet expected housing demand
 - support economic development objectives of the RES

SA findings to date

- **Lower growth rate (371,000 dwellings) likely to:**
 - cause housing shortages
 - require a minimum of 54,175 dwellings on non-PDL (1,686ha)
 - 4.4% increase in regional household CO2 emissions; 30% reduction if strict policies applied
 - limited deficits in water supplies
 - increase municipal waste arisings by 14%-17%