

To assess the Infrastructure implications of the emerging RSS Preferred Option and support the development of the Implementation Plan



Jo Baker – Mott MacDonald
26th July 2007



a b c

Our Work-Programme

- Work-Package 1: Identification of Constraints
- Work-Package 2: Development of Work Programme
- Work-Package 3: Development of Governance Process
- Work-Package 4: Added Value
- Work-Package 5: Assist with the preparation of the Implementation Plan



a b c

Main Objective

- Identify Constraints and Showstoppers at a Strategic Level
- A desk-based study reviewing available data and knowledge

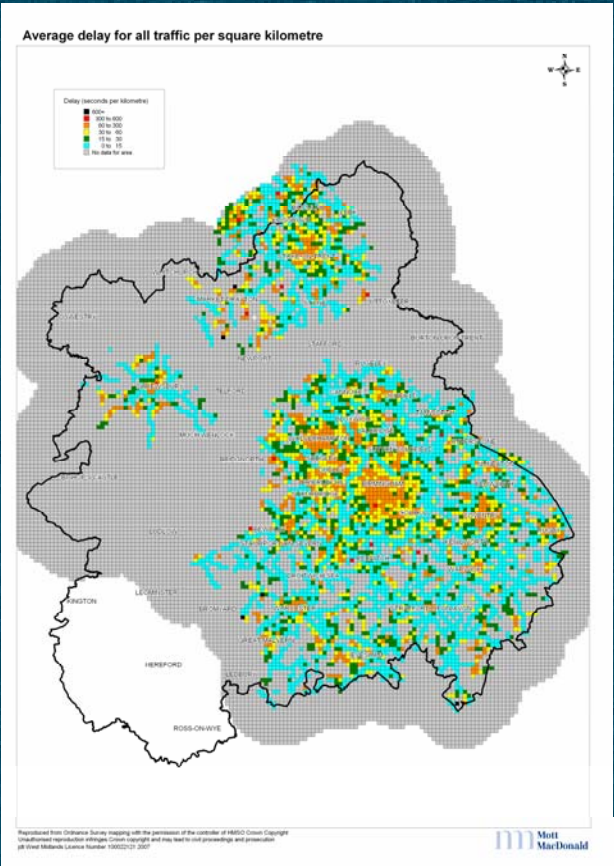
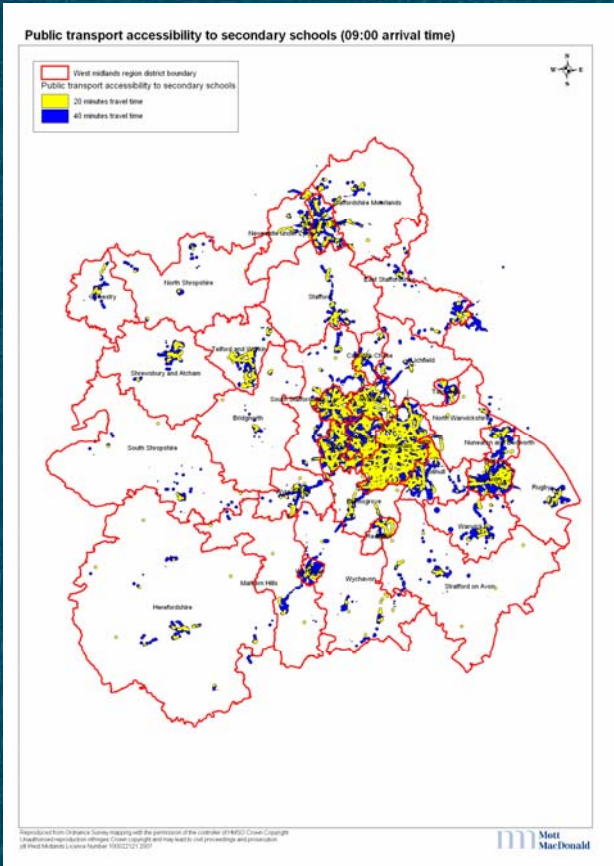
Congestion and Accessibility

- Most accessible locations are most congested
- Requirement to develop in accessible locations to minimise car dependency
- Requirement to promote alternatives to car usage and sustainable transport choices such as integrated development
- Particular concern in West Midlands conurbation and focii



a b c

Congestion and Accessibility

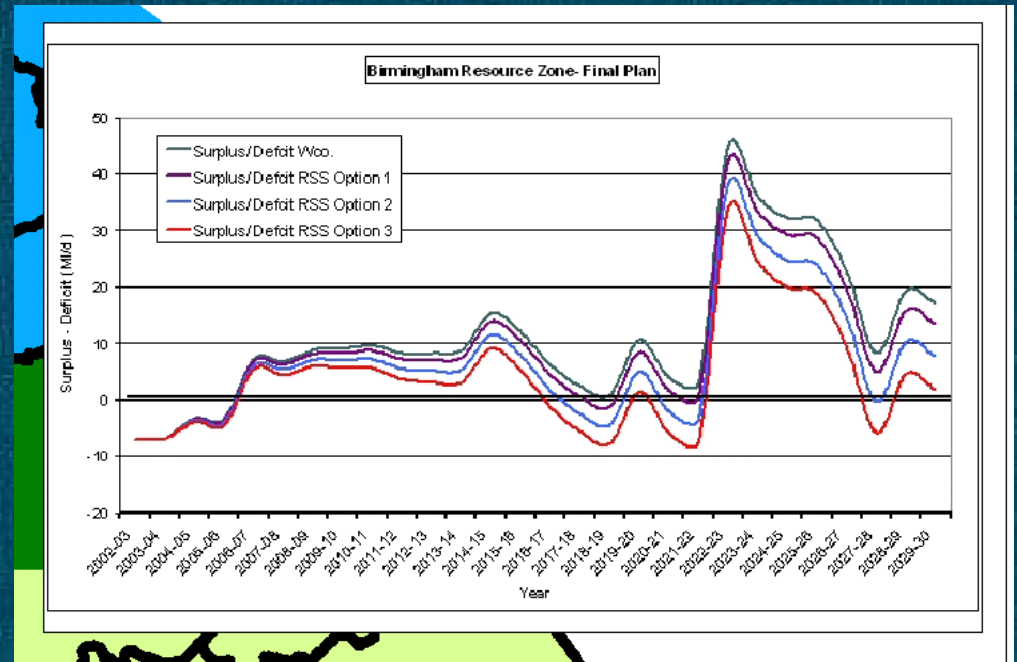
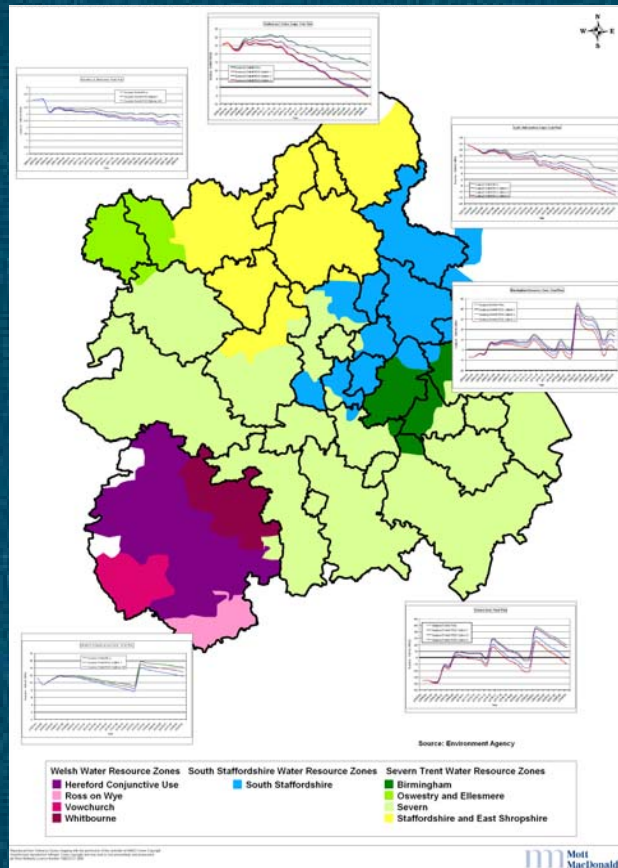


a b c

Water

- Water is the main area of concern:
 - Supply
 - Disposal
 - Flooding

EA Assessment of Water Supply



a b c

Sewage Treatment Capacity Risk Assessment

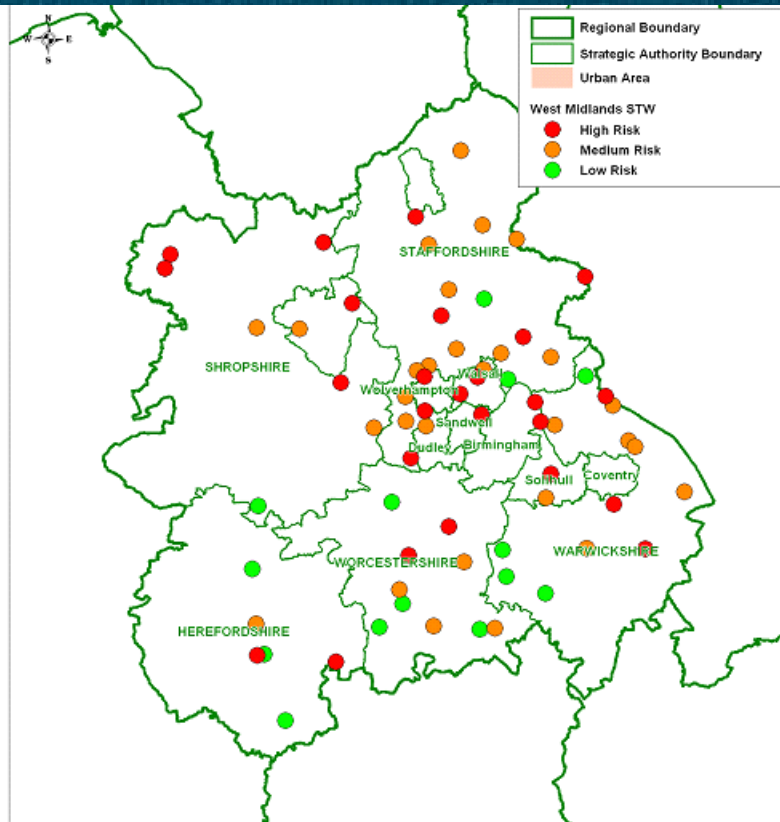
Notes:

Based on flow risk.
 Estimated flow is calculated as $0.180 \times \text{population equivalent}$
 in lieu of actual data from Water Companies and is assumed
 to be a representation of Dry Weather Flow (DWF).

High: Estimated flow is 100 per cent of consented DWF
 (negligible opportunity)

Medium: Estimated flow is $\geq 75\%$ of consented DWF
 (limited opportunity)

Low: Estimated flow is $< 75\%$ of consented DWF
 (potential opportunity)



Source: Environment Agency

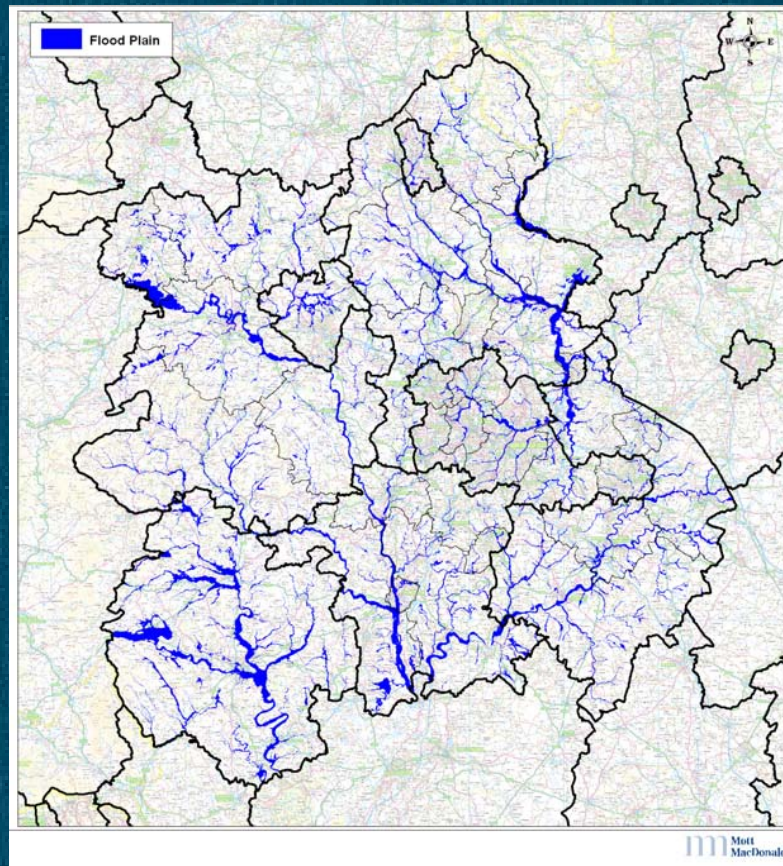
Prepared from Ordnance Survey mapping with the permission of the controller of Her Majesty's Stationery Office. Copyright in the database and/or other material (where appropriate) held by the Ordnance Survey is hereby acknowledged.

Mott MacDonald

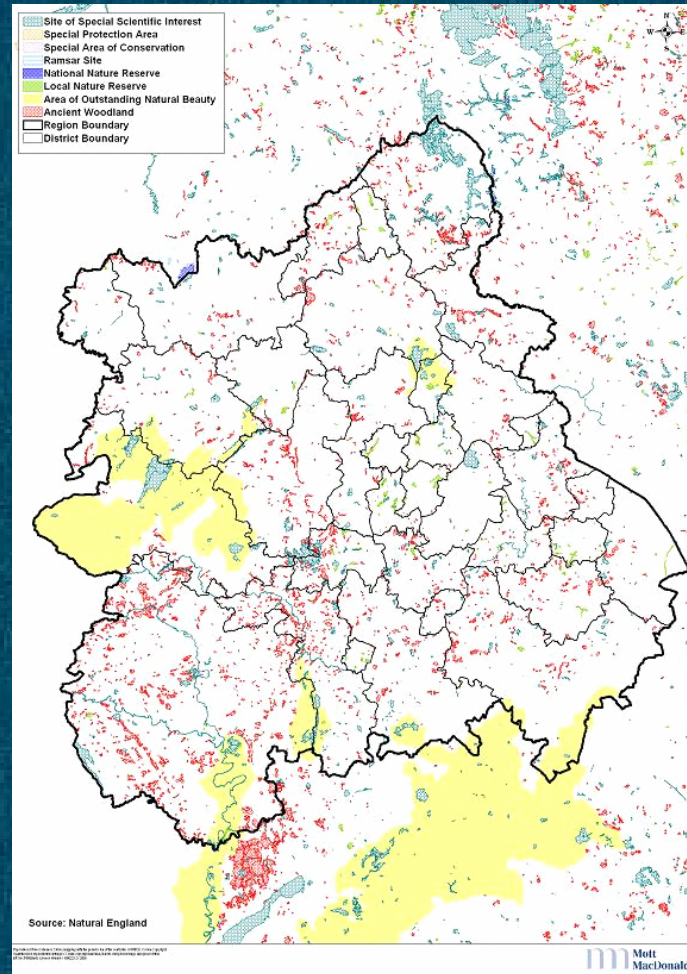


a b c

Floodplain Constraints



Environmental Constraints



a b c

Showstoppers

- NONE



a b c

Showstoppers

- NONE
- Transport Capacity – high risk for Urban Renaissance in the Met Area, and focii development
- Capacity of Key Motorway Junctions
- Freight – need more and larger facilities, need rail capacity to convey freight
- Climate Change – localised flooding, improve draining, takes space, restricts housing potential
- 10 year lead-in for water resource development
- Delivery of brownfield land



a b c

Overcoming Constraints

- “Predict and Provide” unlikely to deliver growth
- Requirement to move to sustainable communities in line with Government Policy on zero-carbon housing
- Focus on Transport and Water
 - Changing Travel Behaviour
 - Minimising consumption and waste of water
 - Development constrained by floodplains and environmental issues
- Tackle Existing Population, not just new development
- Construction costs may rise to reflect constraints



a b c

A Way Forward

- RSS to set out Implementation Plan which sets out vision of Sustainable Development
- Sustainable Construction Policy
- Policies to feed into LDFs etc
- Many other issues will require further detailed examination at District and site level

Comments and Questions

Jo Baker

Mott MacDonald

jo.baker@mottmac.com

0121-237-4033



a b c