

# Annex E

## Index of Policies

Policy	Page
<b><i>Urban Renaissance</i></b>	
UR1: Implementing Urban Renaissance – the MUAs	20
UR1A: Black Country Regeneration Policies	
UR1B: Housing and Employment Land	
UR1C: Strategic Office Development in the Black Country	
UR1D: Retail Floorspace	
UR2: Towns and Cities Outside Major Urban Areas	22
UR3: Enhancing the role of City, Town and District Centres	24
UR4: Social Infrastructure	25
<b><i>Rural Renaissance</i></b>	
RR1: Rural Renaissance	28
RR2: The Rural Regeneration Zone	29
RR3: Market Towns	30
RR4: Rural Services	32
<b><i>Communities for the Future</i></b>	
CF1: Housing within the Major Urban Areas	34
CF2: Housing beyond the Major Urban Areas	35
CF3: Levels and distribution of housing development	36
CF4: The reuse of land and buildings for housing	39
CF5: Delivering affordable housing and mixed communities	40
CF6: Managing housing land provision	41
<b><i>Prosperity for All</i></b>	
PA1: Prosperity for All	46
PA2: Urban Regeneration Zones	47
PA3: High-Technology Corridors	48
PA4: Development related to Higher/Further Education and Research Establishments and incubator units	49
PA5: Employment Areas in Need of Modernisation and Renewal	50
PA6: Portfolio of Employment Land	51
PA7: Regional Investment Sites	52
PA8: Major Investment Sites	54
PA9: Regional Logistics Sites	55
PA10: Tourism and Culture	56
PA11: The Network of Town and City Centres	58
PA11A: Brierley Hill and Dudley	
PA12: Birmingham's Role as a World City	60
PA13: Out-of-Centre Retail Development	61

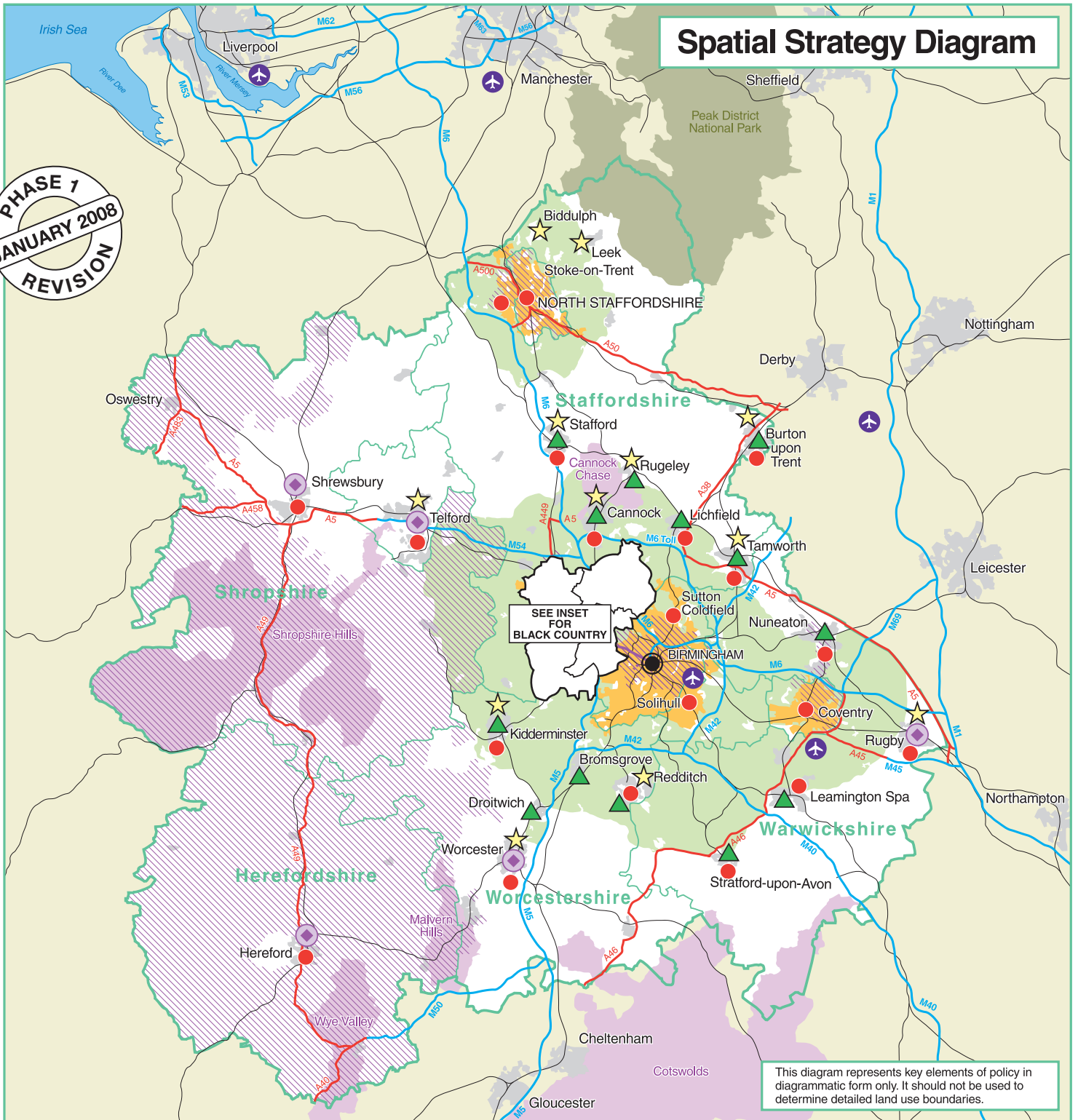
Policy	Page
PA14: Economic Development and the Rural Economy	61
PA15: Agriculture and Farm Diversification	62
<b><i>Quality of the Environment</i></b>	
QE1: Conserving and Enhancing the Environment	70
QE2: Restoring degraded areas and managing and creating high quality new environments	71
QE3: Creating a high quality built environment for all	72
QE4: Greenery, Urban Greenspace and Public Spaces	73
QE5: Protection and enhancement of the Historic Environment	74
QE6: The conservation, enhancement and restoration of the Region's landscape	75
QE7: Protecting, managing and enhancing the Region's Biodiversity and Nature Conservation Resources	78
QE8: Forestry and Woodlands	79
QE9: The Water Environment	80
EN1: Energy Generation	83
EN2: Energy Conservation	84
M1: Mineral Working for Non-Energy Minerals	85
M2: Minerals – Aggregates	87
M3: Minerals -The Use of Alternative Sources of Materials	88
M4: Energy Minerals	89
WD1: Targets for Waste Management in the Region	90
WD2: The Need for Waste Management Facilities – by Sub-Region	91
WD3: Criteria for the Location of Waste Management Facilities	93
<b><i>Transport &amp; Accessibility</i></b>	
T1: Developing accessibility and mobility within the Region to support the Spatial Strategy	104
T2: Reducing the need to travel	106
T3: Walking and cycling	106
T4: Promoting travel awareness	107
T5: Public Transport	108
T6: Strategic Park & Ride	109
T7: Car Parking Standards and Management	110
T8: Demand Management	111
T9: The Management and Development of National and Regional Transport Networks	116
T10: Freight	118
T11: Airports	120
T12: Priorities for Investment	122

---



# Spatial Strategy Diagram

PHASE 1  
JANUARY 2008  
REVISION



This diagram represents key elements of policy in diagrammatic form only. It should not be used to determine detailed land use boundaries.

## Settlements

- Major Urban Area - Main focus for development and investment  
BIRMINGHAM  
BLACK COUNTRY  
COVENTRY  
NORTH STAFFORDSHIRE  
SOLIHULL
- Sub-Regional foci for development beyond MUAs
- Other large settlement

## Regeneration

- Regeneration Zone included in Agenda for Action
- Local Regeneration Area outside of Regeneration Zones
- Regional Centre
- Strategic Centre
- Growth Corridors
- Employment Land Investment Corridors

## Strategic Links

- Motorway
- Core Trunk Road
- Railway
- Midland Metro Line 1
- Metro Extensions (Brierley Hill & Edgbaston)
- Other high volume corridors with potential for enhanced public transport
- Airport

## Environment

- Area of Outstanding Natural Beauty
- National Park
- Green Belt
- Built-up Area
- Strategic Authority Boundary

## BLACK COUNTRY

