

West Midlands Regional Aggregate
Working Party

ANNUAL
REPORT
2007

Chairman
Paul Wilcox
Head of Development Control & Waste Management
Development Services Directorate
Staffordshire County Council
Riverway,
Stafford.
ST16 3TJ

Technical Secretary
Jasbir Kaur
Development Group Manager
Environment and Economy
Directorate
Warwickshire County Council
Shire Hall
Warwick
CV34 4SX

CONTENTS

1. INTRODUCTION
2. THE WEST MIDLANDS REGION
3. SUB-REGIONAL APPORTIONMENT
4. SAND & GRAVEL
5. CRUSHED ROCK
6. PLANNING APPLICATIONS DURING 2007
7. REGIONAL SUMMARY
8. DEVELOPMENT PLANS

Appendix 1 Membership of the WMRAWP at December 2007

Appendix 2 Working Party Publications

Appendix 3 Active and Inactive Aggregate Mineral Workings in the West Midlands Region

Appendix 4 Active Aggregate Recycling Sites in the West Midlands Region

Appendix 5 Sand & Gravel applications 2007

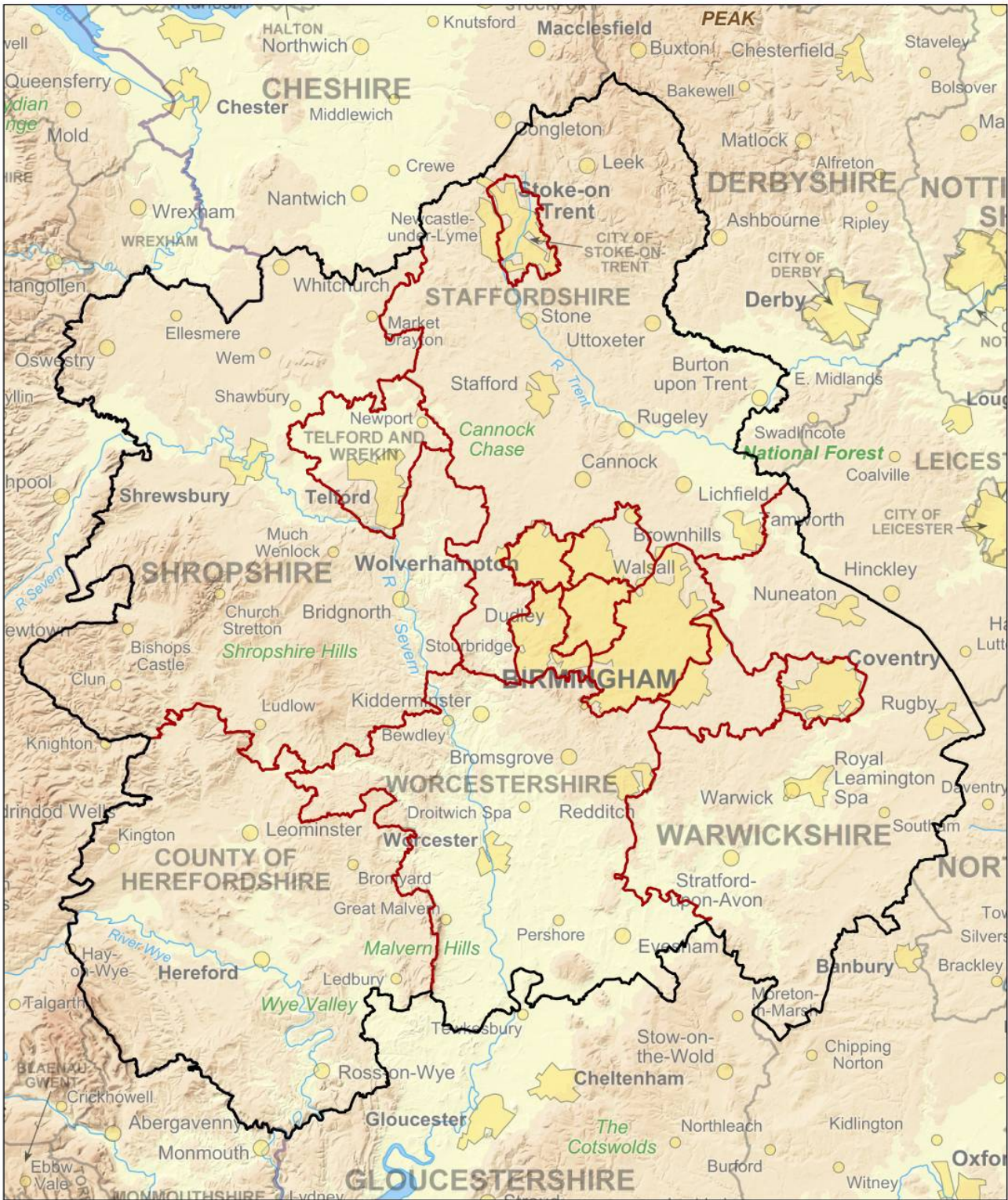
Appendix 6 Crushed Rock applications 2007

Appendix 7 Recycled Aggregate applications 2007

Appendix 8 West Midlands Aggregate Sites

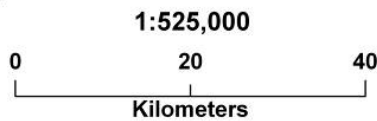
1. Introduction

- 1.1 The West Midlands Regional Aggregates Working Party (WMRAWP) is a technical group established in the 1970's along with nine other working parties covering all the regions of England and Wales. The group plays a major role in data collection, collation and monitoring and provides advice on future regional trends, together with the environmental and other implications of meeting Government aggregate demand forecasts. As well as enabling the mineral planning authorities (MPA's) within the region to formulate plans and policies which reflect national and regional needs, the WMRAWP provides an input to the production of Regional Planning Guidance and Central Government guidelines for aggregate provision.
- 1.2 The WMRAWP draws its members from the MPA's in the region together with representatives from the minerals industry (through its trade associations, the Quarry Products Association (QPA) and the British Aggregates Association (BAA), the Department for Communities and Local Government (CLG), the National Federation of Demolition Contractors (NFDC), the Department for Environment, Food and Rural Affairs (DEFRA) and the Government Office for the West Midlands (GOWM). A list of members is contained in Appendix 1.
- 1.3 This report includes the results of the annual monitoring survey of aggregate sales in the West Midlands Region for 2007. The statistical information on sales and permitted reserves have been provided by the minerals industry and collected and collated by the each individual mineral planning authority, (MPA).



The West Midlands Region

-  County and Unitary Authority Boundaries
-  West Midlands Regional Boundary



Produced by the
Corporate GIS Team,
July 2009.



Based on Ordnance Survey mapping with the permission of the Controller of Her Majesty's Stationary Office.
© Crown Copyright. All rights reserved.
Unauthorised reproduction infringes copyright and may lead to prosecution or civil proceedings.
Warwickshire County Council. 100019520, 2009.



2.0 THE WEST MIDLANDS LOCAL GOVERNMENT AREAS.

2.1 The West Midlands Region comprises the following authorities:-

Three Shire Counties:

Staffordshire
Warwickshire
Worcestershire

Four Unitary Authorities:

Herefordshire
Stoke-on-Trent (formerly part of Staffordshire)
Shropshire
Telford & Wrekin (formerly part of Shropshire)

and the

Metropolitan Districts of the West Midlands County Area (also Unitary Authorities):

Birmingham
Coventry
Dudley
Sandwell
Solihull
Walsall
Wolverhampton

3.0 SUB-REGIONAL APPORTIONMENT

3.1 The “*National and Regional Guidelines for Aggregate Provision in England 2001- 2016* published by CLG in June 2003 (previously the Office of the Deputy Prime Minister) seek to ensure that there is a sufficient supply of aggregates into the UK economy with no geographical imbalances. These guidelines estimated that the West Midlands Region would need to produce 359 million tonnes (mt) of total aggregates during the period 2001-2016. These guidelines assume that 88mt will be provided from alternative aggregate sources such as demolition waste and 16mt will be imported from Wales (mainly Powys). Therefore 255mt of Primary Aggregate was required from the West Midlands in 2007 comprising 162 mt of sand and gravel and 93mt of crushed rock. However, it should be noted that the current national guidelines have been reviewed and the new revised figures were issued.. They include a new total Primary Aggregate requirement from 2005 to 2020 inclusive of 247 mt comprising 165 mt of sand and gravel and 82 mt of crushed rock. These guidelines have yet to be apportioned by the Regional Assembly to the local level.

3.2 In ensuring the supply of the required aggregates for the 16 year period the Guidelines cover the totals for sand and gravel and crushed rock have been divided into an annual apportionment for each Mineral Planning Authority. Tables 1 and 3 show how the apportionments were calculated.

3.3 Sand & Gravel

Table 1 Proportional Share (%) of Regional Sand & Gravel Production for each County
(production figures in million tonnes)

	1999 Production	2000 Production	2001 Production	Average Production	Average (%)
Herefordshire	0.297	0.289	0.261	0.282	2.8
Worcestershire	0.887	0.839	0.836	0.854	8.6
Shropshire	0.808	0.742	0.857	0.802	8.1
Staffordshire	6.589	6.442	6.411	6.481	65.2
Warwickshire	1.017	1.043	1.031	1.030	10.3
W. Midlands County	0.474	0.481	0.536	0.497	5
Regional Total	10.072	9.836	9.932	9.945	100

3.4 It is assumed that sand and gravel provision will remain at similar levels throughout the 16 year period covered by the guidelines. The total figure for sand and gravel in the West Midlands Region (162mt) was therefore apportioned between the counties by multiplying this figure by each county’s average proportional production over the years 1999 – 2001 and dividing the result by 16 years to produce an annual figure.

Table 2 Annual Apportionment of Sand & Gravel

	Apportionment of Regional Guidelines	Annual Provision
Herefordshire	$162\text{mt} \times 2.8\% \div 16$	0.283 mt
Worcestershire	$162\text{mt} \times 8.6\% \div 16$	0.871 mt
Shropshire	$162\text{mt} \times 8.1\% \div 16$	0.820 mt
Staffordshire	$162\text{mt} \times 65.2\% \div 16$	6.602 mt
Warwickshire	$162\text{mt} \times 10.3\% \div 16$	1.043 mt
W. Midlands County	$162\text{mt} \times 5\% \div 16$	0.506 mt
Regional Total		10.125mt

3.5 Crushed Rock

Table 3 Proportional Share (%) of Regional Crushed Rock Production for Each County
(production figures in million tonnes)

Crushed Rock	1999 Production	2000 Production	2001 Production	Average Production	Average %
Herefordshire	#	#	#	0.42	7.3
Worcestershire	#	#	#	0.16	2.8
Shropshire	2.80	2.64	2.49	2.64	45.8
Staffordshire	1.48	1.33	1.33	1.38	24.0
Warwickshire	0.62	0.57	0.57	0.59	10.2
W. Midlands County	0.72	0.45	0.53	0.57	9.9
Regional Total	6.23	5.56	5.49	5.76	100

denotes figures not shown for reasons of confidentiality

3.6 It is assumed that crushed rock provision will remain at similar levels throughout the 16 year period covered by the guidelines. The total figure for crushed rock in the West Midlands Region (93mt) was therefore apportioned between the counties by multiplying this figure by each county's average proportional production from 1999 – 2001 and dividing the result by 16 years to produce the annual figure.

3.7 Table 4 Annual Apportionment of Crushed Rock

Crushed Rock	Apportionment of Regional Guidelines	Annual Provision
Herefordshire	$93\text{mt} \times 7.3\% \div 16$	0.424 mt
Worcestershire	$93\text{mt} \times 2.8\% \div 16$	0.163 mt
Shropshire	$93\text{mt} \times 45.8\% \div 16$	2.662 mt
Staffordshire	$93\text{mt} \times 24.2\% \div 16$	1.395 mt
Warwickshire	$93\text{mt} \times 10.2\% \div 16$	0.593 mt
W. Midlands County	$93\text{mt} \times 9.9\% \div 16$	0.575 mt
Regional Total		5.812mt

3.8 The West Midlands County Area (WMCA) had an estimated crushed rock landbank at 1st January 2002 of between 3 and 4 years and this could not be replaced. Therefore a further apportionment of the WMCA share was agreed. Hard rock production ceased and therefore the 0.575mt share was divided equally between Warwickshire and Shropshire, which were the only counties with availability of a similar rock type.

3.9 The revised apportionment for crushed rock has now come into effect as full production in the WMCA ceased in 2006 / 2007 as the one remaining quarry is now exhausted.

3.10 Table 5 Annual Apportionment of Crushed Rock West Midlands (removing W. Mids County)

	Apportionment of Regional Guidelines	Annual Provision
Herefordshire	$93\text{mt} \times 7.3\% \div 16$	0.424 mt
Worcestershire	$93\text{mt} \times 2.8\% \div 16$	0.163 mt
Shropshire	$93\text{mt} \times 45.8\% \div 16 + 0.02875 \text{ mt}$	2.949 mt
Staffordshire	$93\text{mt} \times 24.2\% \div 16$	1.395 mt
Warwickshire	$93\text{mt} \times 10.2\% \div 16 + 0.2875 \text{ mt}$	0.88 mt
W. Midlands County	No apportionment	0
Regional Total		5.812mt

4.0 SAND AND GRAVEL

The following tables show the total sales and permitted reserves for sand and gravel for aggregate purposes in the West Midlands.

4.1 Table 6 Sand & Gravel Sales for Aggregate Purposes 2004 - 2007 (million tonnes)

	2004	2005	2006	2007
Herefordshire	.25	.24	.19(est)	.19
Worcestershire	.85	.75	.70	.81
Shropshire	.84	.83	.77	.78
Staffordshire	6.1	5.8	6.8	6.44
Warwickshire	.84	.90	.98	1.19
W. Midlands County	.52	.58	.55	.61
Regional Total	9.4*	9.1	9.99	10.02

** This figure was incorrectly given as 8.8 in the 2006 Report*

4.2 The total sales of sand and gravel in the West Midlands Region have increased by around 0.26 million tonnes which reflects the general increase in construction activity throughout the year. This continued the upward trend of the previous year but at a much lower rate. Staffordshire showed a decrease of 0.4 million tonnes whilst Warwickshire showed a 0.21 increase in sales. In relation to the apportionments, most authorities have sales less than their apportionment except for Warwickshire. The overall figures are also slightly less than the total apportionment.

4.3 **Table 7 Sand & Gravel Permitted Reserves 2003-2007**
(million tonnes)

County	2003	2004 (est)	2005	2006	2007
Herefordshire	5.95	5.7	5.1	5.3	5.1
Worcestershire	6.43	5.58	4.3	3.6	4.1
Shropshire	14.80	13.96	13.8	13.8	13.02
Staffordshire	103.80*	97.96*	100.15*	88.6*	82.9
Warwickshire	9.29	8.45	8.5	6.2	5.0
W. Midlands County	3.02	2.5	2.0	1.6	2.39
Regional Total	143.29	134.15	133.85	123.8	112.51

*Staffordshire include 3.5 million tonnes permitted in Statutory Dormant Sites.

4.4 Total permitted reserves of sand and gravel in the West Midlands has continued its general fall over the last few years in line with the overall national trend of falling permitted reserves for sand and gravel. The decline in permitted reserves appears to be accelerating as operators find it harder to get new permissions. It should be noted that there is an increase in the West Midlands County permitted reserves following the approval of an application at for an extension of Meriden in Solihull and partly due to a correction to data of one of the quarries in Walsall. The 2006 -2007 figures for the particular quarry did not reflect an increase in the permitted reserve due to an agreement allowing deeper working and therefore an underestimation of the extent of the remaining resource.

4.5 **Table 8 Sand and Gravel Reserves 2007 and Landbanks 2005 to 2007**

	Landbank at 31.12.05 (years)	Reserves At 31.12.06 (million tonnes)	Local Annual Apportion	Landbank at 31.12.06 (Years)	Landbank at 31.12.07 (Years)
Herefordshire	18	6.7	0.283	14	18
Worcestershire	4.9	3.6	0.871	4.1	4.7
Shropshire	16.8	14.2	0.820	17.3	15.87
Staffordshire	15.2	88.6*	6.602	13.4	12
Warwickshire	8.1	6.2	1.043	5.9	4.8
W Midlands County	4.0	1.6	0.506	3.1	4.7

*Staffordshire include 3.5 million tonnes permitted in Statutory Dormant Sites

Landbank figures are given in years and are calculated by dividing an MPA's total permitted reserve by its annual apportionment. With MPS1 advising that Mineral Planning Authorities (MPAs) should aim to maintain landbanks at 7 years or above it is quite clear that at the end of 2006 Worcestershire, Warwickshire and the West Midlands County (Solihull, Walsall) are well below this figure and are starting to deplete rapidly despite the approval of a recent extension in Solihull

4.6 In summary therefore most MPA's in the West Midlands show a steady decline at a time when there is increasing pressure to accommodate more much more construction especially in the proposed Growth Areas of the region.

5.0 **CRUSHED ROCK**

West Midlands County Area Crushed Rock reserves were all but exhausted in 2005 so the revised apportionments for Shropshire and Warwickshire are now shown, the West Midlands County apportionment being shared between these two MPA's.

5.1 **Table 9 Crushed Rock Sales for Aggregate Purposes 2003 – 2007 (million tonnes)**

	2003	2004 (est)	2005	2006	2007
Herefordshire/Worcester©	0.42	0.46	0.29	0.3	0.756
Shropshire	2.46	2.47	2.5	2.6	2.33
Staffordshire	1.05	0.87	Confidential*	Confidential*	Confidential*
Warwickshire*	0.70	0.66	1.4*	1.4*	1.39*
W Midlands County	0.80	0.63	0.31	-	-
Regional Total	5.28	5.43	5.09	4.5	4.48

© combined figures for Worcestershire/Herefordshire for reasons of confidentiality

* Warwickshire and Staffordshire combined for reasons of confidentiality.

Overall crushed rock sales in the West Midlands continue to show a steady but small fall on overall quantity. The sales pattern with the West Midlands region remains consistent with previous years with no apparent major fluctuations of the supply chain.

5.2 **Table 10 Crushed Rock Reserves 2002-2007 (million tonnes)**

	2003	2004 (est)	2005	2006	2007
Herefordshire	16.96	16.5	15.9	8.0	7.7
Worcestershire	confidential	confidential	confidential	confidential	confidential
Shropshire	87.40	84.93	96.4	95.5	93.17
Staffordshire	176.15	171.6	162.5	161.2	160.91
Warwickshire	31.5	31.4	29.2	30.8	30.2
W.Midlands County	1.08	0.45	.28	0	0
TOTAL	313.63	304.88	304.58	298.0	291.98

* Based on AMRI total for 2007 subtracted from 95.5

Permitted reserves of Crushed rock in the West Midlands region have declined slightly from 2005 but still remain around the 300 million tonne mark.

5.3 **Table 11 Crushed Rock Landbank**

	Landbank 2005 (Yrs)	Landbank 2006 (Yrs)	Annual Apportion ment (mt)	Reserves at 31.12.07 (mt)	Landbank 2007 (yrs)
Herefordshire	37.5	18	0.424	7.7	18
Worcestershire	confidential	confidential	0.163	confidential	confidential
Shropshire	32.7	32.6	2.949	93.17	31.6
Staffordshire	116.5	115.4	1.395	160.91	115
Warwickshire	33.2	35.0	0.88	30.2	34.34
W. Midlands County	(<1yr)	-	-	0	0
TOTAL	220.9	201		291.66	198.94

Worcestershire's contribution to the region is very small and will diminish quickly. However, the Landbanks in Herefordshire, Staffordshire, Shropshire and Warwickshire remain very healthy even after absorbing the apportionment for the West Midlands county since the last quarry in the area, located in Sandwell, ceased production.

6. REGIONAL EVENTS OF INTEREST

Housing Completions

6.1 To enable comparisons between aggregate consumption and house building, annual reports since 1998 have shown details of housing completions in the Region over the previous six years. Housing completions are calculated on the basis of financial years and therefore the available published figures are for the period of time covered in this report is 2006/07.

Table 12 – Housing Completions in the West Midlands Region 2006-07 (WMRA)

Area (Unitary Authority/Strategic Authority)	Total Gross Completions 2006/07	Annual RSS Target Provision (to 2007)	%age Variance from RSS target 2006-2007	Total Annual Completions Gross – 2001-2007	RSS Total Specified Provision (to 2007) 2001-2007	%age Variance from Target RSS Provision
Birmingham	3,079	2,300	34	19,292	13,800	40
Dudley	737	600	23	3,191	3,600	-11
Sandwell	1,479	900	64	6,706	5,400	24
Walsall	768	500	54	3,393	3000	13
Wolverhampton	335	500	-33	3,146	3000	5
Coventry	1,123	650	73	4,761	3,900	22
Solihull	784	400	96	3,844	2,400	60
Stoke-on-Trent	805	600	34	4,498	3,600	25
Warwickshire	3,018	2,000	51	16,216	12,000	35
Staffordshire	2,816	2,900	-3	17,380	17,400	0
Shropshire	1,261	1,300	-3	7,219	7,800	-7
Telford & Wrekin	469	1,330	-65	3,718	7,980	-53
Herefordshire	840	800	5	3,989	4,800	-17
Worcestershire	1,925	1,900	1	12,241	11,400	7
West Midlands Region	19,439	16,680	17	109,594	100,080	10

Source: 2007 Annual Monitoring Report (AMR) - published February 2008

(amended from West Midlands Regional Spatial Strategy AMR 2005)

- 6.2 Over the period 2006 to 2007 gross housing completions for the whole of the West Midlands Region fell by 1007 from last years total. Telford and Wrekin's completions are well below the annual RSS target provision by 58% from the previous year and this reinforces the cumulative shortfall when assessed against the overall variance from the RSS target provision over the last six years. Similar trends can be identified in Dudley as was stated last year. Herefordshire still produces a cumulative shortfall although in the last two years it has been close to achieving its target provision. Although Wolverhampton is on course to meet its cumulative target it appeared to have a particularly bad year in terms of meeting the annual target with a swing of almost -100% from the previous year.
- 6.3 The attractiveness of the Sub-region of Warwickshire, Coventry and Solihull for developers was evident in the very large number of completions in relation to the target figures. For instance Solihull completions for the last year were double the target figure and up 19% in 2006 to 73% in 2007. All of the Major Urban Areas achieved the target provisions with the exception of Wolverhampton. Some such as Birmingham have exceeded their target by a substantial amount.
- 6.4 Total demolitions across the West Midlands Region have risen by 907 since 2005/06. The 2006/07 total was 14% above the WMRSS assumption, in contrast with the previous year's performance, which was approximately 17% below the assumption. Demolitions in the Major Urban Areas were this year 11% above the expected level; in Other Areas, numbers of demolitions were a little less above the corresponding assumption than in 2005/06, at +41%. The impact of the recession would not have been fully felt in the year 2007-2008 although it did begin to take hold towards the end of the year. Any impact was not evident at this stage.

7 CONSTRUCTION AND DEMOLITION WASTE

- 7.1 The 2006 Survey attempted to gather meaningful information on the production of recycled aggregates in the West Midlands Region. The 2007 Survey also seeks to publish the information where it is available. This exercise has been previously undertaken through RAWP but the results from previous surveys had been limited. There have always been problems in respect of the collection of data in previous surveys and although data on the use and production of secondary aggregates is important for the region, it was considered that the RAWP survey may not be the most ideal vehicle to use to gather this important data.
- 7.2 Despite the problems encounters by all MPA's in undertaking this exercise Staffordshire was able to produce some important figures.

Staffordshire's permitted waste recycling sites producing alternative aggregates are listed in Appendix 2.4 of the county's AMR (Annual Monitoring Report). The figures show that Staffordshire had an approximate annual capacity of 366,000 tonnes recycled material.

8. DEVELOPMENT PLANS

8.1 This chapter updates the position within the region on the preparation and adoption of plans containing minerals policies. This information provides the current status as of July 2009, rather than the status at the end of 2007.

8. DEVELOPMENT PLANS

8.1 This chapter updates the position within the region on the preparation and adoption of plans containing minerals policies. This information provides the current status as of April 2009, rather than the status at the end of 2007.

8.2 The **Planning & Compulsory Purchase Act 2004** has changed the way that development plans are prepared. Under the new legislation, the development plan for each authority now comprises:

- The approved **Regional Spatial Strategy (RSS)** for the area
- Existing adopted plans which have been “saved” for a transitional period
- Adopted **Development Plan Documents (DPDs)** which form part of the authority’s **Minerals and Waste Development Framework (MWDF)** or **Local Development Framework (LDF)** – see below

8.3 The RSS for the West Midlands Region is currently RPG11: Regional Planning Guidance for the West Midlands January 2008. The change from RPG11 to RSS occurred in September 2004 in line with enactment of the Planning and Compulsory Purchase Act. The RSS is being reviewed in stages with Phase 1 covering the Black Country Area now completed. The RSS waste policies have been reviewed as part of the Phase 2 Revision and the RSS minerals policies are being reviewed as part of the Phase 3 Revision. A final project plan was published in May 2009 for Minerals, which has been consulted on in June 2009.

RSS Phase 2 Revision – Waste

8.4 The RSS Phase 2 Revision has reviewed the current regional waste strategy. The Preferred Option was submitted to the Secretary of State in December 2007. However, consultation was extended in light of a study commissioned by the Government Office for the West Midlands (GOWM), into options for delivering higher housing numbers. The study was carried out by planning consultants, Nathaniel Lichfield and Partners (NLP), and the final report was published on 7th October. Formal consultation on the RSS Phase 2 Preferred Option ended on 8th December 2008. The Examination in Public for Phase 2 began on 28 April 2009 and is expected to finish in June 2009.

RSS Phase 3 Revision - Minerals

8.5 The RSS minerals policies are being reviewed as part of the Phase 3 Revision, for which a draft project plan was published in November 2007 and consultation ended on 18th January 2008. The final project plan has now been published and this confirms that the following tasks will be undertaken under RSS Phase 3 –

- To prepare a diagrammatic map of regionally important mineral resources – brick clays (including fireclays), natural building and roofing stone and aggregates
- To develop a new policy on safeguarding regionally important mineral resources using existing mineral resource information and minerals and mineral related infrastructure
- To examine and produce new sub-regional apportionments for the period 2007-2026
- To examine the supply of and demand for brick clays in the Region

- To examine the development of strategic stockpiles of brick clays (including fireclays) across the Region.
- 8.6 Preliminary consultation with mineral planning authorities on the RSS Phase 3 Revision under Section 4 (4) of the Planning and Compulsory Purchase Act was undertaken during 2008, and consultation on the Options took place June – August 2009.

Minerals and Waste Local Development Frameworks and Local Development Frameworks

- 8.7 Mineral and Waste Planning Authorities are now required to prepare Minerals and Waste Development Frameworks (MWDFs) in Shire County areas or Local Development Frameworks (LDFs) in Unitary Authority areas. Although the Minerals and Waste Local Plans for all relevant authorities were prepared under previous legislation, they were permitted to retain their status for a three year period after the commencement of the Planning Act, i.e. until September 2007. The Minerals and Waste Local Plans will be progressively replaced by DPDs in MWDFs.
- 8.8 Where it was felt necessary to save certain policies contained beyond September 2007, the authorities put forward a case to the Secretary of State by the deadline of 30th April 2007. The Secretary of State issued a Direction on the 7th September 2007, to save certain policies beyond the 28th September 2007. Walsall UDP minerals policies M1 – M have all been “saved” to
- 8.9 Whereas some authorities will prepare a planning framework covering their own area, others may agree to produce joint plans covering more than one authority area. For example, the Black Country authorities (Dudley, Sandwell, Walsall and Wolverhampton) have agreed to work together on a joint Core Strategy. There may be other examples.
- 8.10 MWDFs and LDFs are not single plans – they are a “folder” or “portfolio” containing a range of plans. The plans that sit within these frameworks are called local development documents (LDDs) and there are three types. Documents that form part of the authority’s development plan are known as development plan documents (DPDs) and documents that explain or expand on the policies in an adopted “saved” plan or DPD are called supplementary planning documents (SPDs). The third type of document is the Statement of Community Involvement (SCI), which sets out how stakeholders and local communities will be involved in the planning process.
- 8.11 As a minimum, each authority is expected to prepare a SCI and a Core Strategy DPD with Strategic Site Allocations and Proposals Map. Recent revisions to PPS12 (June 2008) allow authorities to allocate “Strategic Sites” in a Core Strategy where these would be central to the achievement of the strategy (PPS12, paragraphs 4.6 – 4.7). Core Strategies must also be supported by evidence of the infrastructure required to enable the amount of development proposed for the area, how it will be provided and by whom. The recent revisions to PPS12 have removed the requirement for planning authorities to prepare a separate Site Allocations DPD where the “Strategic Sites” and criteria based policies contained in the Core Strategy are deemed to be sufficient.
- 8.12 Before it begins work on its MWDF or LDF, each Mineral Planning Authority will have produced a Minerals and Waste Development Scheme or Local Development Scheme, which sets out the authority’s programme for preparing the documents that will be included in its MWDF or LDF and the timescale for their production.
- 8.13 As part of the Minerals and Waste Development Framework an Annual Monitoring Report (AMR) must be produced by each authority. These documents will review progress on emerging Local Development Documents against the agreed Minerals and Waste Development Schemes and assess the extent to which policies in Local Development Documents are being successfully implemented. Whilst the new MWDF are being developed, AMR’s will also monitor the ‘saved’ policies from Minerals and Waste Local Plans.

- 8.14 All Shire County and former Shire County areas in the region are covered by adopted Minerals Local Plans, and all Unitary Authority areas are covered by adopted Unitary Development Plans (UDPs). Plan reviews are programmed in most areas but the new procedures for MWDFs and LDFs are having an impact on timetabling.
- 8.15 In the Metropolitan areas, most authorities have on-site recycling or secondary aggregates/recycling policies in their adopted Unitary Development Plans. However, not all of these plans contain primary aggregate policies because they are not relevant in areas where aggregates are not present or are unlikely ever to be worked.

Development Plan Status for the Shire Counties

Shire Counties	Structure Plan Adopted	Minerals Plan Adopted	Minerals Development Framework Status/Timetable
Worcestershire	Worcestershire County Structure Plan 1996-2011. (Saved Until 2007) Saved Polices Now exist.	The County of Hereford and Worcester Minerals Local Plan (April 1997) Saved Until Sept 2007 Saved Polices Now exist.	Minerals Core Strategy – Under Review Waste Core Strategy and Proposals Map documents Recommencement 2008 3 rd Qtr Options Consultation 2008 4 th Qtr Preferred Options Consultation 2009 3 rd Qtr Pre-Submission 2011 1 st Qtr Submission to SoS 2011 2 nd Qtr Examination 2011 3 rd Qtr Adoption 2012 2 nd Qtr
Staffordshire	May 2001 and amended 2002 (due to a High Court challenge) Saved Polices Now exist.	Saved Policies Now Exist.	Minerals Core Strategy (including Strategic Sites) 2 nd Issues and Options Consultation Sept 2008 Preferred Options Sept 2009 Publication of the Strategy and SA report June 2010 Submission Sept 2010 Examination Jan 2011 Adoption June 2011 Waste Core Strategy 2 nd Issues and Options Consultation Sept 2008 Preferred Options Nov 2009 Publication of the Strategy and SA report July 2010 Submission Sept 2010 Examination Jan 2011 Adoption Sept 2011 NB Formal revisions yet to be submitted and agreed by GOWM
Warwickshire	August 2001 Saved Polices Now exist.	February 1995 Saved Until Sept 2007 Saved Policies Now Exist.	Minerals Core Strategy and Strategic Sites Spatial Options Jan 2009 Preferred Options Nov 2009 Submission to SoS July 2010 Examination Jan 2011 Estimated Adoption Sept 2011 Waste Core Strategy – Under Revision

Development Plan Status of the Unitary Authorities

Unitary Authority	Unitary Development Plan adopted	Development Framework Status	Aggregates Policies
Birmingham	July 1993	<p>Core Strategy</p> <p>Sustainability scoping May 2008</p> <p>Preferred Options and SA April 2009</p> <p>Submission to SoS May 2010</p> <p>Pre-examination Nov 2010</p> <p>Examination Feb 2011</p> <p>Inspectors Report June 2011</p> <p>Adoption Sept 2011</p>	Waste and Recycling to be address within Core Strategy.
<p>Black County Core Strategy</p> <p>Joint Core Strategy</p> <p>Dudley</p> <p>Sandwell</p> <p>Walsall</p> <p>Wolverhampton</p>		<p>Core Strategy</p> <p>Preferred Options Mar 2008</p> <p>Publication Nov 2009</p> <p>Submission to S of S Feb 2010</p> <p>Pre-Examination Meeting Apr 2010</p> <p>Examination Jun 2010</p> <p>Adoption Mar 2012</p>	The Black Country Core Strategy will include a spatial strategy for the Black Country and policies aimed at addressing strategic minerals and waste issues, including mineral safeguarding, supply of primary aggregates and use of alternatives to primary aggregates.
Coventry	December 2001	<p>Core Strategy</p> <p>Preferred Options Oct 2007</p> <p>Submission to SoS Jun 2009</p> <p>Pre-examination Aug 2009</p> <p>Examination Sept 2009</p> <p>Inspector's Report Feb 2010</p> <p>Adoption Mar 2010</p> <p>City Centre Area Action Plan</p> <p>Issues Consultation Jan 2008</p> <p>Jerde masterplan Sept 2008</p> <p>Jerde final masterplan Mar 2009</p> <p>Emerging Strategy Sept 2009</p> <p>Submission July 2010</p>	Waste and Recycling to be addressed within Core Strategy.

		Pre-Hearing mtg Sept 2010 Hearing commences Oct 2010 Inspectors Report Jan 2011	
Dudley	Dudley UDP 2005 (adopted Oct 2005)	The Joint Black County Core Strategy continues to progress. Dudley MBC are producing a Development Strategy DPD which may include some minerals policy or site specific designations. The timescale for this is: Published Oct 2010 Submitted March 2011 Examined July 2011 Adopted March 2011 .	Adopted UDP contains Policies on Primary and Secondary Minerals. The Black Country Core Strategy will include spatial strategy for Black Country and policies aimed at addressing strategic minerals and waste issues, including mineral safeguarding, supply of primary aggregates and use of alternatives to primary aggregates.
Herefordshire	Hereford and Worcester County Structure Plan (1986-2003) Adopted 1993 Herefordshire UDP – Est. Adoption Spring 2007, will be saved for 3 years from adoption date.	LDF – Core Strategy Preferred Options Oct 2008 Submission to SoS June 2009 Public consultation on June – July 2009 submitted DPD Pre-Examination meeting Oct 2009 Examination Dec 2009 Receipt of Report May 2010 Adoption July 2010 NB This timetable will be subject to revision in early 2009 following publication of the Planning Bill.	Minerals and Waste Separate Chapters and Policies within current and replacement UDP. Adopted Core Strategy will contain Minerals and Waste Policies and Allocations of Strategic Sites.
Sandwell	Sandwell UDP 2004 (adopted 2004)	Black Country Core Strategy (see above) DPD Land Allocations Preparation Jan 2007 Issues/Options/SA June 2008 Preferred Option Feb 2009 Submission to SoS Sept 2009 Public Examination March 2010 Adoption of Maps Sept 2010	The Black Country Core Strategy will include spatial strategy for Black Country and policies aimed at addressing strategic minerals and waste issues, including mineral safeguarding, supply of primary aggregates and use of alternatives to primary aggregates.

Stoke-on-Trent	<p>Structure Plan Adopted 2001</p> <p>Minerals Local Plan - Staffordshire and Stoke on Trent – (1994 – 2006)</p> <p>Waste Local Plan – Staffordshire and Stoke on Trent (1998 – 2011)</p>	<p>LDF Core Strategy</p> <p>Commencement Jan 2007</p> <p>Pre Submission Stage April 2007</p> <p>Submission to SoS July 2008</p> <p>Examination Mar 2009</p> <p>Adoption Nov 2009</p> <p>Waste Core Strategy DPD</p> <p>Commencement - February 2008</p> <p>Scope of SA - Feb - July 2008</p> <p>Options - Sept 2009</p> <p>Publication – July 2010</p> <p>Submission - Nov 2010</p> <p>Hearing - March 2011</p> <p>Adoption - Sept 2011</p>	<p>Minerals</p> <p>No formal Minerals DPD to be produced, a number of safeguarded Mineral sites are included within the Core Strategy.</p>
Shropshire	<p>Shropshire and Telford & Wrekin Structure Plan 1996 – 2011 Adopted November 2002</p> <p>Saved Polices Now exist.</p>	<p>April 2000</p> <p>Saved Until Sept 2007</p> <p>Saved Policies Now Exist</p>	<p>Unitary LDF - Timetable to be announced.</p>
Telford & Wrekin	<p>The Shropshire County Council and Borough of Telford & Wrekin Joint Structure Plan until 2011.</p> <p>Borough of Telford & Wrekin and Shropshire County Council Minerals Local Plan. 1996 – 2006</p>	<p>Core Strategy</p> <p>Early Community Involvement Spring 2003 – Summer 2004</p> <p>Preferred Options Sept - Oct 2005</p> <p>Date for Submission to SoS Nov 2006</p> <p>Pre-examination March 2007</p> <p>Examination May 2007</p> <p>Estimate Date of Adoption Dec 2007</p> <p>Core Strategy adopted December 2007 minus the minerals and waste policies</p>	<p>Minerals DPD</p> <p>Early Community Involvement 2003-2004</p> <p>Issues and Options Feb 2006</p> <p>Preferred Options Nov 2006</p> <p>Minerals DPD now suspended until further notice</p> <p>Waste DPD</p> <p>Estimated Adoption Dec 2007</p>

<p>Walsall</p>	<p>Walsall UDP 2005 (adopted March 2005) Saved Minerals Strategic Policy Statement 9.1 – 9.11 and minerals policies M1 – M9 in place</p> <p>Designing Walsall SPD (adopted February 2009)</p> <p>Conserving Walsall’s Natural Environment SPD (adopted April 2009)</p>	<p>Black Country Core Strategy (see above) will form the basis of LDF Core Strategy.</p> <p>Land Allocations and Development Management DPD</p> <table border="0"> <tr> <td>Start</td> <td>Oct 2010</td> </tr> <tr> <td>Consultation</td> <td>Jun 2011</td> </tr> <tr> <td>Publication</td> <td>Nov 2012</td> </tr> <tr> <td>Submission to SoS</td> <td>Feb 2013</td> </tr> <tr> <td>Pre-examination Meeting</td> <td>Apr 2013</td> </tr> <tr> <td>Examination</td> <td>Jun 2013</td> </tr> <tr> <td>Adoption</td> <td>Feb 2014</td> </tr> </table>	Start	Oct 2010	Consultation	Jun 2011	Publication	Nov 2012	Submission to SoS	Feb 2013	Pre-examination Meeting	Apr 2013	Examination	Jun 2013	Adoption	Feb 2014	<p>Adopted UDP defines MSAs and contains mineral planning policies, including policies relating to aggregates/ quarries producing aggregates (Policies M2, M3).</p> <p>Designing Walsall and Conserving Walsall’s Natural Environment SPDs support policies in the adopted UDP. They address issues such as sustainable design and construction (supporting re-use of buildings and building materials) and protection of designated nature conservation sites including geological SSSIs and SINCs.</p> <p>The Land Allocations and Development Management DPD will identify suitable sites for a variety of future uses within Walsall and will set out policies to manage site allocations and other development proposals.</p>
Start	Oct 2010																
Consultation	Jun 2011																
Publication	Nov 2012																
Submission to SoS	Feb 2013																
Pre-examination Meeting	Apr 2013																
Examination	Jun 2013																
Adoption	Feb 2014																
<p>Wolverhampton</p>	<p>Wolverhampton UDP 2006 (adopted June 2006)</p>	<p>Black Country Core Strategy (see above) will form part of LDF.</p> <p>Site Allocations DPD - All minerals issues will be addressed in the Core Strategy.</p> <table border="0"> <tr> <td>Commencement</td> <td>Jan 09,</td> </tr> <tr> <td>Issues</td> <td>April 2011,</td> </tr> <tr> <td>Publication</td> <td>March 2012,</td> </tr> <tr> <td>Submission</td> <td>July 2012,</td> </tr> <tr> <td>Pre-examination Meeting</td> <td>September 2012,</td> </tr> <tr> <td>Commencement of Examination</td> <td>November 2012,</td> </tr> <tr> <td>Adoption</td> <td>May 2013.</td> </tr> </table>	Commencement	Jan 09,	Issues	April 2011,	Publication	March 2012,	Submission	July 2012,	Pre-examination Meeting	September 2012,	Commencement of Examination	November 2012,	Adoption	May 2013.	<p>The Black Country Core Strategy will include spatial strategy for Black Country and policies aimed at addressing strategic minerals and waste issues, including mineral safeguarding, supply of primary aggregates and use of alternatives to primary aggregates.</p>
Commencement	Jan 09,																
Issues	April 2011,																
Publication	March 2012,																
Submission	July 2012,																
Pre-examination Meeting	September 2012,																
Commencement of Examination	November 2012,																
Adoption	May 2013.																

APPENDIX 1

MEMBERSHIP OF THE WEST MIDLANDS REGIONAL AGGREGATES WORKING PARTY – December 2007

Chairman

P Wilcox Staffordshire County Council

Technical Secretary

Jasbir Kaur Warwickshire County Council

Mineral Planning Authority Representatives

N. Dean	Worcestershire County Council
M. Salim	Sandwell Metropolitan Borough Council
M. Bell	Shropshire County Council
B. Davies	Stoke on Trent City Council
D. Wigfield	Solihull Metropolitan Borough Council
M. Griffin	Staffordshire County Council
D. Coxill	Telford & Wrekin Council
D. Klein	Herefordshire County Council
T. Lyons	Warwickshire County Council
D. Harris	Walsall Council
J. Davies	Warwickshire County Council
C. Blakeley	West Midlands Regional Assembly

Industry Representatives

K. Hobden	Mineral Products Association (MPA)
M. Daynes	MPA - Hanson Aggregates
R. Halley	MPA - Lafarge Aggregates
R. S Hill	MPA - Tarmac Central
M. A Rowley	MPA - Cemex
C. Doyley	MPA – Ennstone Johnstone
D. Coleman	National Federation of Demolition Contractors (NFDC) – Coleman & Company
N McLean	NFDC - Armac D.E.L.
P Huxtable	British Aggregates Association (BAA)
T Evans	BAA - Montspur

Central Government Representatives

D. Wilkes	Communities and Local Government
R. Colbourne	Government Office for the West Midlands (GOWM)
D. Howatson	GOWM / Department for the Environment, Food and Rural Affairs (DEFRA)

APPENDIX 2

WORKING PARTY PUBLICATIONS

Hard Copies

Annual Report 1996	(£10.00)
Annual Report 1997	(£10.00)
Annual Report 1998	(£10.00)
Annual Report 1999	(£12.50)
Annual Report 2000	(£12.50)
Annual Report 2001	(£15.00)
Annual Report 2002	(£15.00)
Annual Report 2003	(£15.00)
Annual Report 2004	(£15.00)
<i>Annual report 2005</i>	<i>electronic copy</i>
<i>Annual Report 2006</i>	<i>electronic copy</i>
<i>Annual Report 2007</i>	<i>electronic copy</i>

All prices include postage & packing to destinations on the UK Mainland

To obtain these reports contact:

Environment and Economy
Warwickshire County Council
PO Box 43
Shire Hall
Warwick CV34 4SX

Telephone: 01926 412391

Fax: 01926 412641

e-mail: planningstrategy@warwickshire.gov.uk

Electronic Copies

Electronic copies from and including the 2003 report can be down loaded free from the Department of Communities and Local Government Website for the following years,

APPENDIX 3

ACTIVE AND INACTIVE AGGREGATE MINERAL WORKINGS IN THE WEST MIDLANDS REGION

The following list sets out active and inactive aggregate mineral workings in the region which contain permitted reserves. The site lists relate to the site's status in July 2009. Sites marked with an * are statutorily dormant under the terms of the Environment Act 1995.

Active Sand & Gravel Sites

Site Name	Operator	Grid Reference
Herefordshire		
Wellington Quarry (Morton Camp)	Tarmac Western	SO 507 378
Wellington South		
St Donats		
Shobden		
Lugg Bridge		
Staffordshire		
Newbold Quarry (-Tucklesholme)	Aggregate Industries	SK 205 195
Leasowes Farm, Uttoxeter	Aggregate Industries	SK 097 351
Elford	Hanson Aggregates	SK177113
Anglesey Sandpits	Blakemore.J	SK 058 068
Enville Road	Davis, F.G. & Sons	SO 872 898
Captain's Barn Farm	C. E and J.M Dale	
Money more	Hanson Aggregates	SK133 026
Barton	Hanson Aggregates	SK 195 155
Freehay	Hanson Aggregates	SK 015 411
Wolsely Park Farm (Borrow Pit)	Mr Till	
Pottal Pool	Hanson Aggregates	SJ 973 147
Trentham	Hanson Aggregates	SJ 750 380
Alrewas	Lafarge Aggregates	SK 175 125
Shoal Hill, Huntingdon	Inglewood Investments	SJ 970 120
Rugeley	Cemex	SK 010 181
Weeford	Cemex	SK 133 026
Money stone	WBB Minerals	SK 041 462
Hints	Tarmac Central	SK 163 462
Croxden	Tarmac Central	SK 033 417
Seisdon	Tarmac Central	SO 700 950
Shire Oak	Tarmac Central	SK 063 042
Cranebrook Quarry	Walsall Concrete	SK 070 064

Shropshire		
Wood Lane Quarry	Tudor Griffiths	SJ 422 328
Norton Farm	Hanson Aggregates	SJ 497 075
Bromfield Quarry	Plymouth Estates	SO 481 773
Buildwas Quarry	Harry Price Sand and Gravel	SJ 647 041
Tern Hill Quarry	Cemex	SJ 656 302
Gonsal Quarry	Salop Sand & Gravel	SJ 484 044
Bridgwalton Quarry	Salop Sand & Gravel	SO 689 920
<i>Sites with resolutions to grant planning permission</i>		
Woodcote Wood	Cemex	SO 689 920
Barnsley Lane	Grundon	SO 762 928
Warwickshire		
Brinklow Quarry	Mrs J Aston	SP 422 787
Ling Hall Quarry	Ennstone Breedon	SP 450 730
Middleton Hall	Hanson Aggregates	SP 193 973
Blyth Hall (Coleshill)	Cemex	SP201 897
High Cross	Cemex	SP 465 887
Marsh Farm	Cemex	SP 075 525
Bubbenhall Quarry	Smiths Concrete	SP 363 713
West Midlands County		
Branton Hill Lane Quarry, Walsall	Bliss Aggregates	SK 065 003
Aldridge Quarry, Walsall	Cemex	SK 067 026
Berkswell Quarry, Solihull	Cemex	SP 228 807
Meriden Quarry, Solihull	Tarmac Central	SP 232 813
Worcestershire		
Ripple Quarry	Cemex	SO 792 728
Wildmoor Quarry	John Williams (Cinetic Sand)	SO 950 759
Sandy Lane	Stanley N Evans	SO 950 763
Ball Mill	Tarmac Western	SO 834 610
Clifton	Tarmac Western	SO 848 456
Chadwich Lane Quarry	Salop Sand & Gravel Supply Co.	SO 957 770
Chadwich Mill Farm (Pinches)	Brian Hill Haulage & Plant Hire	SO 967 755
Active Crushed Rock Sites		

HEREFORDSHIRE		
Smiths Quarry, Perton	Elliot and Sons	SO 595 399
Leinthall Earls Quarry	Johnston Roadstone	SO 443 684
Nash Scar		
Staffordshire		
Cauldon Low	Tarmac Central	SK 084 474

Shropshire (including Telford & Wrekin) (T&W)		
Lea Quarry	Aggregate Industries	SO 590 980
Haughmond Hill Quarry	Aggregate Industries	SJ 542 148
Coates Quarry	Aggregate Industries	SO 602 994
Clee Hill Quarry	Hanson Aggregates	SO 599 762
Llynclys Quarry	Lafarge Aggregates	SJ 264 242
Leaton Quarry	Ennstone	SJ 615 115
Bayston Hill Quarry	Tarmac Western	SJ 493 091
Grinshill Quarry	Grinshill	SJ 352 323
Warwickshire		
Griff No 4	Hanson - Aggregates	SP 369 886
Mancetter	Tarmac Central	SP 310 952
West Midlands County		
Edwin Richards Quarry	Midland Quarry Products	SO 967 884
Worcestershire		
Broadway	Smith & Son (Bletchington)	SP 118 368
Inactive Sand & Gravel Sites		
Herefordshire		
St Donats Quarry	Lafarge Aggregate	SO 489 467
Upper Lyde Gravel Pit	Hussar Minerals	SO 493 448
Shobdon	Tarmac Western	SO 307 605
Staffordshire		
Saredon Quarry	Biffa Waste Services	SJ 944 080
Poolhouse Road	CWI Trustees	SO 853 927
Manor Park	Hanson Aggregates	SK 144 12
Hilton Park	Hanson Aggregates	SJ 952 045
Hinksford Lane	Mr & Mrs Munday	SO 866 904
Four Ashes	Salop Sand & Gravel Co.	SJ 927 097

Upper Whittimere	Ariot	SO 833 925
Weavers Hill	Salop Sand & Gravel Co.	SJ 794 203
Whittington Hall Lane	Severn Trent Water Ltd	SO 870 820
Shropshire		
Sleep Quarry	Hanson Aggregates	SJ 480 265
Cound Quarry	Hanson Aggregates	SJ 550 060
Morville Quarry	Lafarge Aggregates	SO 685 936
Conyburg Wood Quarry	Hanson Aggregates	SJ 675 274
Warwickshire		
Dunton Quarry	KSD	SP 188 933
Worcestershire		
Inactive Crushed Rock Sites		
Herefordshire		
Nash Quarry	Tarmac Western	SO 302 623
Staffordshire		
Kevin	Tarmac Central	SK 086 465
Wardlow / Wredon	Tarmac Central	SK 087 572
Shropshire (including Telford & Wrekin)		
Farley	“non-mineral owner”	SJ 629 017
Callow	Tarmac Western	SJ 387 050
More Quarry (<i>dormant</i>)	Tarmac Western	SO 325 933
Blodwel Quarry	Hanson Aggregates	SJ 257 229
Nantmawr Quarry (<i>dormant</i>)	Hanson Aggregates	SJ 253 242
Warwickshire		
Jees / Boons Quarry	Midland Quarry Products	SP 333 940
Griff No 5 Quarry	Hanson Aggregates	SP 367 886

APPENDIX 4

ACTIVE RECYCLING AND SECONDARY AGGREGATE SITES IN THE WEST MIDLANDS

Following the successful introduction of lists of active and inactive quarries in the region in previous AMRs, the list of permitted active aggregate recycling facilities has been retained and updated where possible. The listing below reflects the position at April 2009. Whilst the list includes all reported sites it may not be complete. The sites listed here are permanent/ long-term facilities only, as it is not possible to monitor mobile plant with any accuracy.

Site Name	Operator	Post Code
BIRMINGHAM		
251 Bordesley Green Road,	Armoury Group Ltd	B8 1BY
Tameside Drive, Castle Bromwich	Ballast Phoenix	B35 7AG
London Road, Canwell, Su'Coldfield	Cemex	B75 5SZ
Shady Lane, Great Barr	Coleman & Co	B44 9ER
194 Yardley Road, Acocks Green	FC Richardson	B27 6LR
253 Bordesley Green Road	Tarmac Recycling	B8 1BY
Armac DEL	Coleman & Co	B33 9AX
Arden House, Heartlands	DSM Recycling	B8 1DE
COVENTRY		
Stone Brook Way, Blackburn Road Est	Tom Waite	CV6 6LN
HEREFORDSHIRE		
Wellington Quarry	Tarmac	HR4 8BY
Rotherwas Ind Est, Hereford	Wye Valley Group	HR2 6JH
Stanner, Kington	KTH Group	HR5 3NW
Thorn Business Park	Quickskip Herford	HR2 6JT
Porthouse Ind Est, Bromyard	KTH Group	HR7 4NS
Leinthall Earls Quarry	Johnstone Roadstone	HR6 97H
SANDWELL		
Victoria Street, Smethwick	Glenside Recycling	B66 2ND
Park Rose Ind Est, Middlemore Rd	Grinsell Skip Hire	B66 2DZ
Edwin Richards Quarry, Rowley Regis	Midland Quarry Products	B65 9BU
Union Road, Oldbury	Oldbury Recycling Ltd	B69 3EX
Bescot Depot	Tarmac Recycling	
Monway House, Wednesbury	HE Humphries	WS10 7DZ
SHROPSHIRE/TELFORD WREKIN		
Fenns Bank, Whitchurch	Befesa Salt Slags	SY13 3PA
Knockin Heath Depot	Greyhound Plant Services	SY10 8DF

Loppington, Wem	Hawk Plant Hire	SY4 5SY
Weeping Cross Lane, Ludow	J M McGrath	SY8 1JH
Lowe Cottage Farm	Peter Griffiths	SY4 5UE
Wood Lane Quarry	Tudor Griffiths	
Dorrington Quarry	H Evason	
Loosemores (Battlefield)	Loosemores Transport	SY4 EDE
Lowe Farm, Wem	Shropshire Recycling Services	
STAFFORDSHIRE		
Alrewas Quarry,	Lafarge Aggregates Ltd	DE13 7DL
Former Carless Refinery, Newcastle	Mr Talbot	
Barleyfields, Anslow	J Taberner Plan Hire	DE13 9PA
Booths Farm, Cheadle	Fallows Landfill	
Enville Road Quarry, Wall Heath	F G David & Son	
Goldings	G D Golding Waste Transfer Station,	
High Carr	Cherry Hill Skip Hire	
Land off Power Station Road, Rugeley	C Elwell Transport Limited	
Meece Landfill	Accord Operations	
Plot 4. Nicolson Way, Burton on Trent	Tim Bates Plant Hire	
Poplars Landfill	Biffa Waste Services	
Weeford Quarry	Cemex	
Rugeley Power Station	Wrekin Construction Ltd	
Saredon	Biffa Waste Services	
Longbridge Hays	Future Waste	
Rosemary Quarry	Lafarge	
Cheslyn Hay	Lafarge	
STOKE ON TRENT		
Cockshute Sidings	Construction Materials Recycling	ST6 2DZ
Newstead Landfill & MRF, Trentham Rd	Tarmac Recycling	ST4 8HT
Dewsbury Rd, Fenton	KP Parnell	ST4 2RS
SOLIHULL		
Meriden Quarry,	Colemans & Co	
Cornets End, Berkswell.	Colemans & Co	
WALSALL		
Branton Hill Quarry	Bliss Aggregates	WS9 0NX
Coppice Lane, Aldridge	Bace Groundworks	WS9 9AA
WARWICKSHIRE		
Coleshill Quarry	Cemex	

Dunton Quarry, Curdworth	KSD	B76 0BD
Attleborough Fields Ind Est	KSD	CV11 6RY
Ryton Mill	Tipping Resources (Coventry)	CV8 3DX
Whitacre Road	Tipping Resources (Coventry)	
Bayton Road, Bedworth	Hammonds	
Brinklow Quarry	Ashtons	
Middleton Hall Quarry	Hanson Aggregates	B78 2AF
Tuttle Hill, Nuneaton	ABS	
Canalside Yard, Napton	County Skips	
WOLVERHAMPTON		
Spring Rd, Ettingshall	Tarmac Recycling	WV4 6JP
McAuliffe House, Bilston	Stitchacre Ltd	WV14 0TP
WORCESTERSHIRE		
Ball Mill Quarry, Grimley	Tarmac Recycling	WR2 6LU
Blackpole Trading Estate	Blackpole Recycling	WR3 8TJ
Sandhills Farm, Astwood Bank	SE Davis and Sons Ltd	B96 6BG
Hoobrook Industrial Estate, Kidderminster	Lawrence	DY10 1HY
Railway Terrace Rd, Pershore	Tarmac Recycling	WR10 2DP

A P P E N D I X 5 – SAND & GRAVEL APPLICATIONS 2007

Staffordshire

Location	Grid ref.	Type of site	Tonnage(tonnes)	Allocated in Plan?	Status at 31.12.07	Restoration	Main Planning Issues
Wolseley Park Farm,	SK 027 199	Borrow Pit	25,000 cubic metres per annum	No	Granted 10.08.07	Inert infill and agriculture	Retrospective approval for borrow bit adjacent to the Rugeley By Pass.
Land adjacent to Moneystone Quarry, Whsiton	SK 045 463	Extension	6.5mt of silica sandstone	No	Refused 23.08.07	Progressive restoration to grassland, native, wetland, woodland.	Extraction to take place over a 10 year period.
Cranebrook Quarry, Lichfield	SK 071 064	Extension	0.07mt	No	Granted	Inert infill and Agriculture	Extraction of 40,000 tonnes per annum – extend the sand extraction eastwards.

Herefordshire

Location	Grid ref.	Type of site	Tonnage (tonnes)	Allocated in Plan?	Status at 31.12.07	Restoration	Main Planning Issues
Moreton Depot	SO503 473	New Site	2.0 mt	Yes, submitted 16.10.02	Pending	Lakes, Wetland and Nature Conservation	Effect on River Lugg hydrology, SSSI/SAC Access to trunk roads, restoration.

Warwickshire

Location	Grid ref.	Type of site	Tonnage (tonnes)	Allocated in Plan?	Status at 31.12.07	Restoration	Main Planning Issues
Ling Hall Quarry, Rugby		S&G Quarry Coating Plant	75000 tonnes per annum	Yes (application submitted 2005)	Granted 07.02.07	Tied to Quarry	Application for Asphalt Plant plus ancillary developments to produce bituminous road stone materials.

West Midlands

Location	Grid ref.	Type of site	Tonnage (tonnes)	Allocated in Plan?	Status at 31.12.07	Restoration	Main Planning Issues
Branton Hill Quarry, Aldridge, Walsall	406605 300060	Extension to existing quarry	1.2mt	No, but within MSA. Submitted 13.11.01.	Not determined.	Agriculture, wildlife habitat.	Groundwater protection (site is within groundwater source protection zone), highway issues. Awaiting submission of EIA and other environmental and traffic information. Application also in abeyance pending the outcome of a related application submitted in Feb 2006 for a new quarry access road and residential development, which was subsequently called-in after being referred to the Secretary of State under the Green Belt Direction. Following a PLI, permission was granted by the Secretary of State in March 2009 for the new quarry access road and associated housing development. The quarry extension application had still not been determined at April 2009.
Meriden Quarry Solihull	SP 232 813	Extension to Existing quarry	1.4mt	Yes – Policy M3 of the adopted Local Plan.	Approved – May 2008 subject to signing a Section 106 Agreement.	Agriculture, wildlife, inert fill	<p>The extension will extend the life of the existing quarry, enabling the use of existing infrastructure and plant on site. It would take place over 3 phases and take 5 years to implement.</p> <p>Principle of the development – Green Belt Residential amenity</p>

Location	Grid ref.	Type of site	Tonnage (tonnes)	Allocated in Plan?	Status at 31.12.07	Restoration	Main Planning Issues
							Visual amenity Restoration Ecological Issues Potential Archaeological features Effect on watercourses Effect on highways

Worcestershire

Chadwich Lane Quarry (Extension)	SO 955 769	Sand	1,280,000	No	Pending	Agricultural use.	i) Impact on the Green Belt. ii) Impact on the locality, including residential amenity.
Ball Mill Quarry Extension, Grimley: i) Church Farm West ii) Church Farm South	SO 829 613	Sand and gravel	i) Church Farm West: 515,000. ii) Church Farm South: 549,000.	No	Approved 20.04.09 subject to a condition not to allow extraction in Church Farm South	Church Farm West: Agricultural use.	i) Need to maintain County's share of WM Region's aggregate production. ii) Loss of B&MVL. iii) Impact on nationally important archaeological remains. iv) Impact on local amenity (noise and dust). v) Visual and landscape impact.

Shropshire

Location	Grid ref.	Type of site	Tonnage(tonnes)	Allocated in Plan?	Status at 31.12.07	Restoration	Main Planning Issues
Bridgewalton		Sand and Gravel	700,000	No	Resolved to grant in 2008. Section 106	Water based habitat creation and	Excavation of sand and gravel at existing quarry.

					pending.	recreation	
--	--	--	--	--	----------	------------	--

A P P E N D I X 6 – CRUSHED ROCK APPLICATIONS 2007*

Staffordshire

Location	Grid ref.	Type of site	Tonnage(tonnes)	Allocated in Plan?	Status at 31.12.07	Restoration	Main Planning Issues
Cauldon Cement Works	SK 084 481	Limestone	Extension.	No	Awaiting Completion of legal agreement.		Extension will remove an acutely angled working face.

Telford and Wrekin

Location	Grid ref.	Type of site	Tonnage(tonnes)	Allocated in Plan?	Status at 31.12.07	Restoration	Main Planning Issues

Shropshire

Location	Grid ref.	Type of site	Tonnage(tonnes)	Allocated in Plan?	Status at 31.12.07	Restoration	Main Planning Issues
Haughmond Hill Quarry		Gritstone	3.2 mt	No	Decision outstanding – not yet determined.	Enhanced restoration including grassland habitat creation.	Production of gritstone and conglomerate with high psv content.

A P P E N D I X 7 – RECYCLED AGGREGATE APPLICATIONS 2007

Staffordshire

Location	Grid ref.	Type of site	Annual Output	Date Received	Status at 31.12.07	Restoration	Main Planning Issues
Shireoak Quarry, Chester Road, Walsall	SK 061 039	Material Recycling Facility	N/A	29.02.08	Withdrawn	N/A	Inert waste storage, screening and crushing recycling facility for the pre-treatment of waste prior to landfill and export off site.
Alrewas Quarry, Croxhall Road Alrewas	SK 179 148	Material Recycling Facility	N/A	11.03.08	Granted 11.03.08	N/A	Retention of facilities for recycling of construction and demolition materials.

Warwickshire

Location	Grid ref.	Type of Site	Tonnage (tonnes)	Date submitted	Status at 31.12.07	Restoration	Main Planning Issues
Canalside Yard, Napton		Secondary Aggregate processing		08.03.07	Not yet determined	N/A	Tipping sorting and storage of waste and recycled materials
Bodmoor Green Farm, Coventry Road, Kingsbury		Secondary Aggregate processing		26.03.07	Not yet determined	N/A	Ancillary operation of secondary aggregate production

West Midlands

Location	Grid ref.	Type of site	Annual Output	Date Received	Status at 31.12.07	Restoration	Main Planning Issues
JPE Holdings Ltd, Land off Fryers Road, Bloxwich, Walsall	399370 301360	Resource recovery centre including a MRF/ aggregate washing plant, which will be recovering soil, sand and gravel for re-use as aggregate.	No information supplied with application.	Outline - 09/03/07 Reserved Matters (Phase 1) – 01/08/07	Reserved Matters (Phase 1) approved 18/10/07.	N/A although the applicant has undertaken site remediation which has involved infilling of former coal workings.	Traffic generation/ parking, design and appearance of buildings. Remediation of site already completed. Processing of waste to take place within buildings located in an established employment area. Outline permission granted 06/06/07, Reserved Matters (Phase 1) for MRF/ aggregate washing plant approved 18/10/07 subject to conditions. Still unimplemented at April 2009.
Bace Groundworks Ltd, Coppice Lane, Aldridge, Walsall	404657 302372	Recycling of inert materials for resale as aggregates	No information supplied with application.	22/11/07	Current application (granted 20/02/08).	N/A	Traffic generation, dust, noise, discharge of material onto the highway/ into drainage system. Involves open air processing within an established employment area. Permission granted 20/02/08, subject to conditions, including a requirement for a wheel washing facility. The proposal was implemented shortly afterwards. The application indicated that throughput is up to 74,920 tonnes of CD&EW per annum, but no information was provided on outputs.

APPENDIX 8 - AGGREGATE SITES IN THE WEST MIDLANDS

NB – Plan taken from RRS Revision Phase 3 Consultation

Operational & Non-operational Aggregate Mineral Workings in the West Midlands Region

